

ISSUE TITLE  
ISSUED FOR TENDER

KEY  
NORTH

FLOOR PLAN NOTES:  
DOOR TYPES  
REFER TO DRAWING SERIES A810 FOR DOOR DETAILS  
GLAZING TYPES  
REFER TO DRAWING SERIES A810 FOR GLAZING DETAILS  
WALL TYPES  
REFER TO DRAWING SERIES A810 FOR WALL TYPE DETAILS

LEGEND:  
CARRARK AIR INTAKE  
DOWNPIPE  
FIRE EXTINGUISHER  
FIRE HYDRANT  
FIRE HOSE REEL  
FIRE INDICATOR PANEL  
FLOOR WASTE  
GARAGE CHUTE  
SMOKE EXHAUST  
STAIR PRESSURISATION  
VOID  
DOOR NUMBER  
WINDOW NUMBER  
GLAZING NUMBER  
LOUVER NUMBER

WALL TYPE CODE (REFER TO WALL TYPES SCHEDULE)  
REFER TO FINISHES SCHEDULE FOR INFORMATION  
SLAB LEVEL  
FIRE SEPARATION LEGEND:  
60 MINUTE FIRE SEPARATION  
90 MINUTE FIRE SEPARATION  
120 MINUTE FIRE SEPARATION  
180 MINUTE FIRE SEPARATION  
240 MINUTE FIRE SEPARATION

ZONES LEGEND:  
ZONE TAG  
FLOOR LEVEL  
ROOM NUMBER  
ROOM CODE

ROOM CODE:  
BMA BUILDING MANAGERS GENERAL AREA  
BPA BIKER PARKING  
CAA COMMON AREA - AMENITIES  
CAC COMMON AREA - CIRCULATION  
CAL COMMON AREA - LOBBY  
CAR COMMON AREA - RETIRED COMMERCIAL STORES  
CAV COMMON AREA - VERTICAL TRANSPORT  
CAF COMMON AREA - VERTICAL CHUTE  
CPC CARRARK CIRCULATION  
CPS CARRARK STAIR  
EGS EGRESS STAIR  
LDS LANDSCAPE - DECK PLANTING  
LSC LANDSCAPE - GENERAL  
LSP LANDSCAPE - POND PLANTING  
SRC SERVICES - COMMONS  
SRE SERVICES - ELECTRICAL  
SFP SERVICES - FIRE  
SRH SERVICES - HYDRAULICS  
SPP SERVICES - POOL  
SRR SERVICES - GENERAL

REV	DATE	DESCRIPTION
T1	12/02/25	TENDER ISSUE (T1)
P1	18/02/25	PRELIMINARY ISSUE
D	16/02/25	MAIN CODE CHANGE
C	06/02/25	EARLY WORKS UPDATES
B	14/02/25	GENERAL UPDATES (AMENDED STRUCTURAL COLUINS)
A	03/02/25	EARLY WORKS PACKAGE

**SMFA**

STALLARD MEEK FLIGHTPATH ARCHITECTS  
65 Charles Street, Norwood, SA, 5007 (T) +1 8 8211 6353

**WEBBER**  
EXECUTIVE ARCHITECTURE

Level 24, 300 Baringroop Avenue, Sydney, NSW, 2000 (T) +1 2 937 9988  
Melbourne, Australia, 3000, VIC, 3000 (T) +1 3 959 9999  
www.webberarchitect.com.au

PRINCIPAL ARCHITECT  
**STALLARD MEEK FLIGHTPATH ARCHITECTS**  
65 Charles Street, Norwood, SA, 5007 (T) +1 8 8211 6353

STRUCTURAL: CIVIL  
**MATTER CONSULTING**  
Level 14, 95 Gairdner Street, Adelaide, SA, 5000 (T) +1 8 8311 3799

MECHANICAL: ELECTRICAL: HYDRAULICS  
**BCA ENGINEERS**  
Level 14, 95 Gairdner Street, Adelaide, SA, 5000 (T) +1 8 8312 1700

FIRE SERVICES  
**BCA ENGINEERS**  
Level 14, 95 Gairdner Street, Adelaide, SA, 5000 (T) +1 8 8312 1700

ACoustics  
**WRAP ENGINEERS AND SCIENTISTS LTD**  
33 Bacon Street, Hindmarsh, SA, 5007 (T) +1 8 8314 9900

BUSINESS CENTRE  
**KD BUILDING CERTIFIERS**  
8 Mousa Avenue, Mawson Lakes, SA, 5033 (T) +1 8 8273 8885

CLIENT

**CITIFY**

CITY  
Suite 1, 64 Melbourne Street, North Adelaide, SA, 5006 (T) +1 400 765 132

PROJECT  
**THE BUCKINGHAM**  
1 WALKERVILLE TERRACE  
GILBERTON, SA, 5081

TITLE  
**FLOOR PLAN - BASEMENT 1**

ISSUED STATUS	SCALE @ A1	AUTHORED	APPROVED
<b>TENDER ISSUE</b>	1:100	AP	DR
PROJECT #	FIRST ISSUE	SHEET NO.	REVISION
24500	6/3/2025	A-1003	T1



NOTES:  
 This drawing is copyright and the property of WEBBER Australia and must not be used without written permission.  
 Do not scale this drawing.  
 All dimensions are to be verified on site and any discrepancies reported before commencement of any work on this drawing.

KEY  
 NORTH

FLOOR PLAN NOTES:  
 REFER TO DRAWING DOOR SCHEDULE A801 FOR DOOR DETAILS  
 GLAZING TYPES  
 REFER TO DRAWING SERIES A8100 FOR GLAZING DETAILS  
 WALL TYPES  
 REFER TO DRAWING SERIES A8200 FOR WALL TYPE DETAILS

LEGEND:  
 C/A CARRIAGE AIR INTAKE  
 D/P DOWNPIPE  
 F/E FIRE EXTINGUISHER  
 F/H FIRE HYDRANT  
 F/R FIRE RISER  
 F/P FIRE INDICATOR PANEL  
 F/W FLOOR WASTE  
 G/C GARBAGE CHUTE  
 S/E SMOKE EXHAUST  
 S/P STAIR PRESSURISATION  
 V VOID  
 DXX DOOR NUMBER  
 WXX WINDOW NUMBER  
 GXX GLAZING NUMBER  
 LXX LOUVER NUMBER

WALL TYPE CODE (REFER TO WALL TYPES SCHEDULE)  
 REFER TO FINISHES SCHEDULE FOR INFORMATION  
 SLAB LEVEL

FIRE SEPARATION LEGEND:  
 60 MINUTE FIRE SEPARATION  
 90 MINUTE FIRE SEPARATION  
 120 MINUTE FIRE SEPARATION  
 180 MINUTE FIRE SEPARATION  
 240 MINUTE FIRE SEPARATION

ZONES LEGEND:  
 ZONE TAG: FLOOR LEVEL ROOM NUMBER  
 ROOM CODE

ROOM CODE:  
 BMA BUILDING MANAGERS GENERAL AREA  
 BPA BIKE PARKING  
 CAA COMMON AREA - AMENITIES  
 CAC COMMON AREA - CIRCULATION  
 CAL COMMON AREA - LOBBY  
 CAR COMMON AREA - RETIRED COMMERCIAL STORES  
 CAW COMMON AREA - VERTICAL TRANSPORT  
 CVC COMMON AREA - VERTICAL CHUTE  
 CPC CARRIAGE CIRCULATION  
 C/S CARRIAGE STAIR  
 E/S EGRESS STAIR  
 L/S LANDSCAPE BAY  
 L/GC LANDSCAPE - GENERAL  
 L/SP LANDSCAPE - SPECIAL PLANTING  
 S/C SERVICES - COMMONS  
 S/E SERVICES - ELECTRICAL  
 S/F SERVICES - FIRE  
 S/H SERVICES - HYDRAULICS  
 S/P SERVICES - POOL  
 S/G SERVICES - GENERAL

ISSUE TITLE  
 ISSUED FOR TENDER

REV	DATE	DESCRIPTION
T1	12/9/2025	TENDER ISSUE (T1)
P1	18/8/2025	PRELIMINARY ISSUE
D	16/6/2025	MAIN CODE CHANGE
C	5/6/2025	EARLY WORKS UPDATES
B	14/2/2025	GENERAL UPDATES (AMENDED STRUCTURAL)
A	6/3/2025	EARLY WORKS PACKAGE

SMFA

STALLARD MEEK FLIGHTPATH ARCHITECTS  
 65 Charles Street, Norwood, SA, 5007 (T) +61 8 8231 6333

WEBBER  
 EXECUTIVE ARCHITECTURE

Level 24, 300 Baringra Avenue, Sydney NSW, 2000  
 Northern District Court Code: NDR 9500 www.webber.com.au

PRINCIPAL ARCHITECT  
 STALLARD MEEK FLIGHTPATH ARCHITECTS (T) +61 8 8231 6333

STRUCTURAL CIVIL  
 MATTER CONSULTING (T) +61 8 8231 3799

MECHANICAL, ELECTRICAL, HYDRAULICS  
 BCA ENGINEERS (T) +61 8 8231 1700

FIRE SERVICES  
 BCA ENGINEERS (T) +61 8 8231 1700

ACOUSTICS  
 WPAZ ENGINEERS AND SCIENTISTS LTD (T) +61 8 8234 9900

BUSINESS CENTRE  
 K2 BUILDING CERTIFIERS (T) +61 8 8231 8888

CLIENT

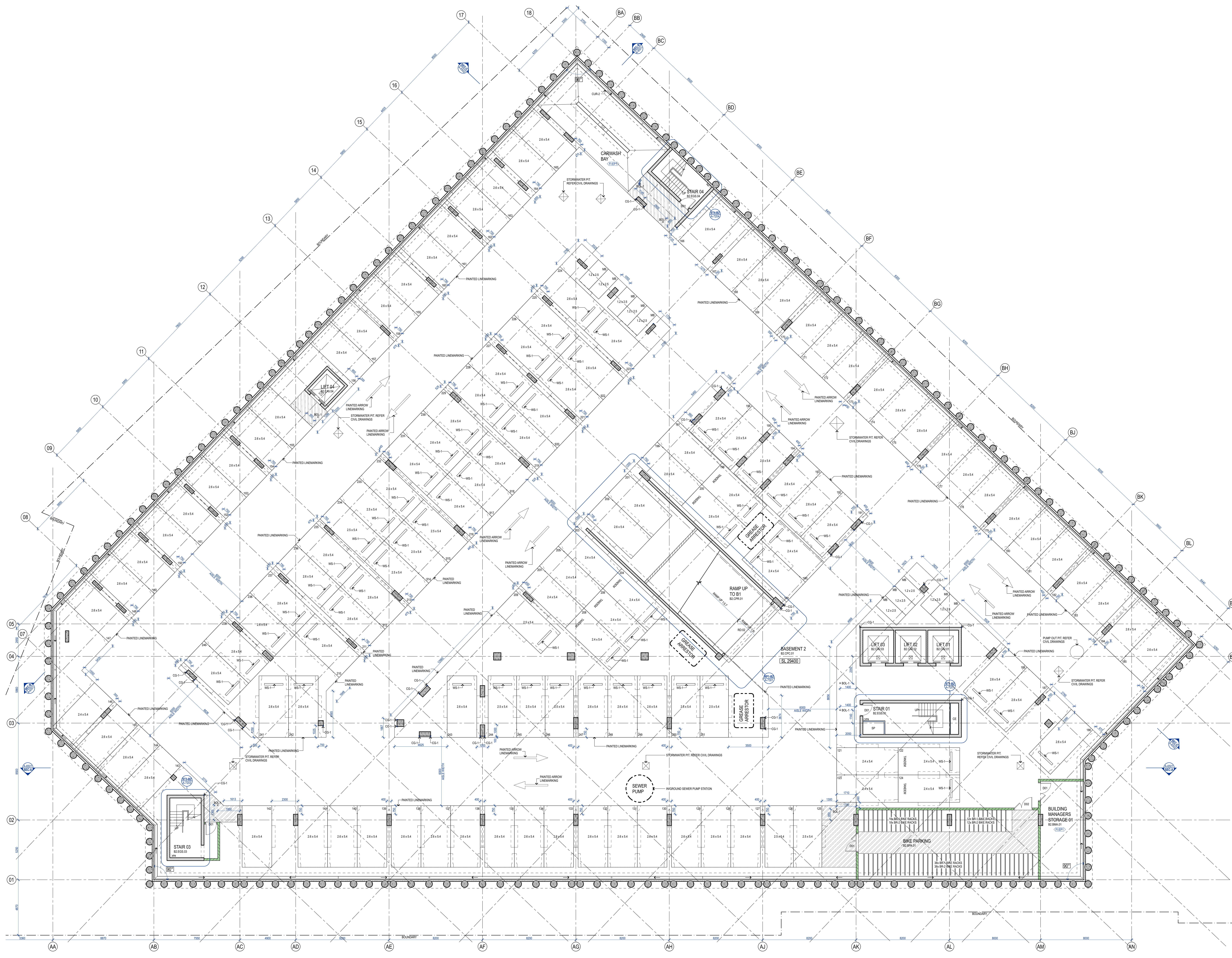
CITIFY

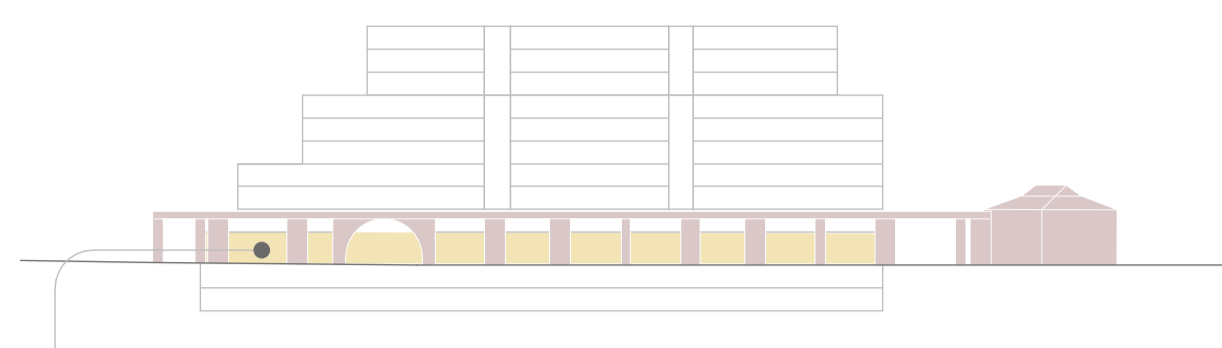
COPY  
 Scale 1:40 Melbourne Street, North Adelaide, SA, 5006 (T) +61 400 765 312

PROJECT  
 THE BUCKINGHAM  
 1 WALKERVILLE TERRACE  
 GILBERTON, SA, 5081

TITLE  
 FLOOR PLAN - BASEMENT 2

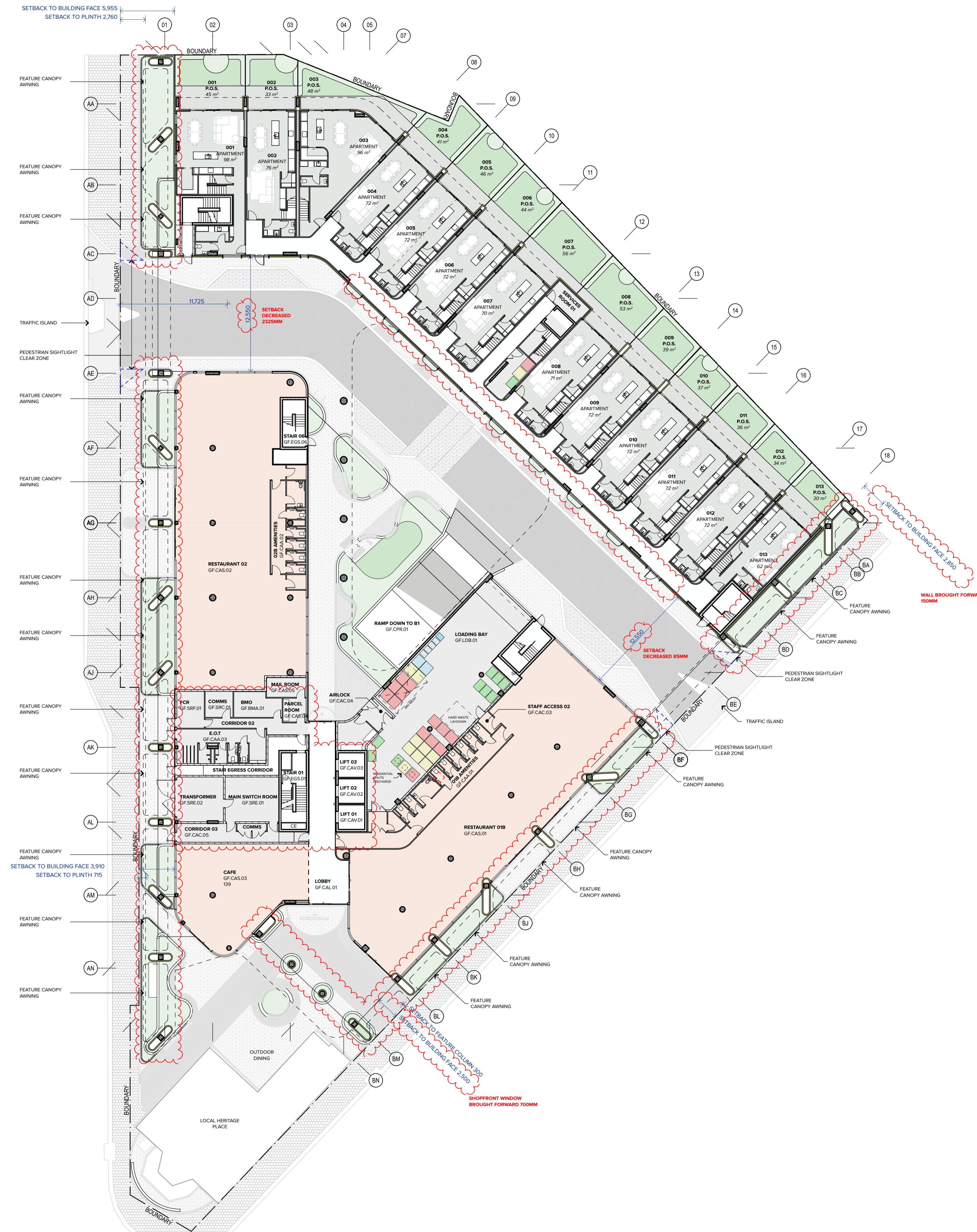
ISSUED STATUS	SCALE @ A1	AUTHORED	APPROVED
TENDER ISSUE	1:100	AP	DR
	PROJECT #	FIRST ISSUE	SHEET NO.
	24500	6/3/2025	A-1001
			REVISION
			T1



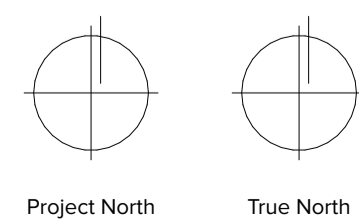


**GROUND**

- APARTMENT
- APARTMENT (NDIS)
- APARTMENT (AFFORDABLE HOUSING)



S M F A

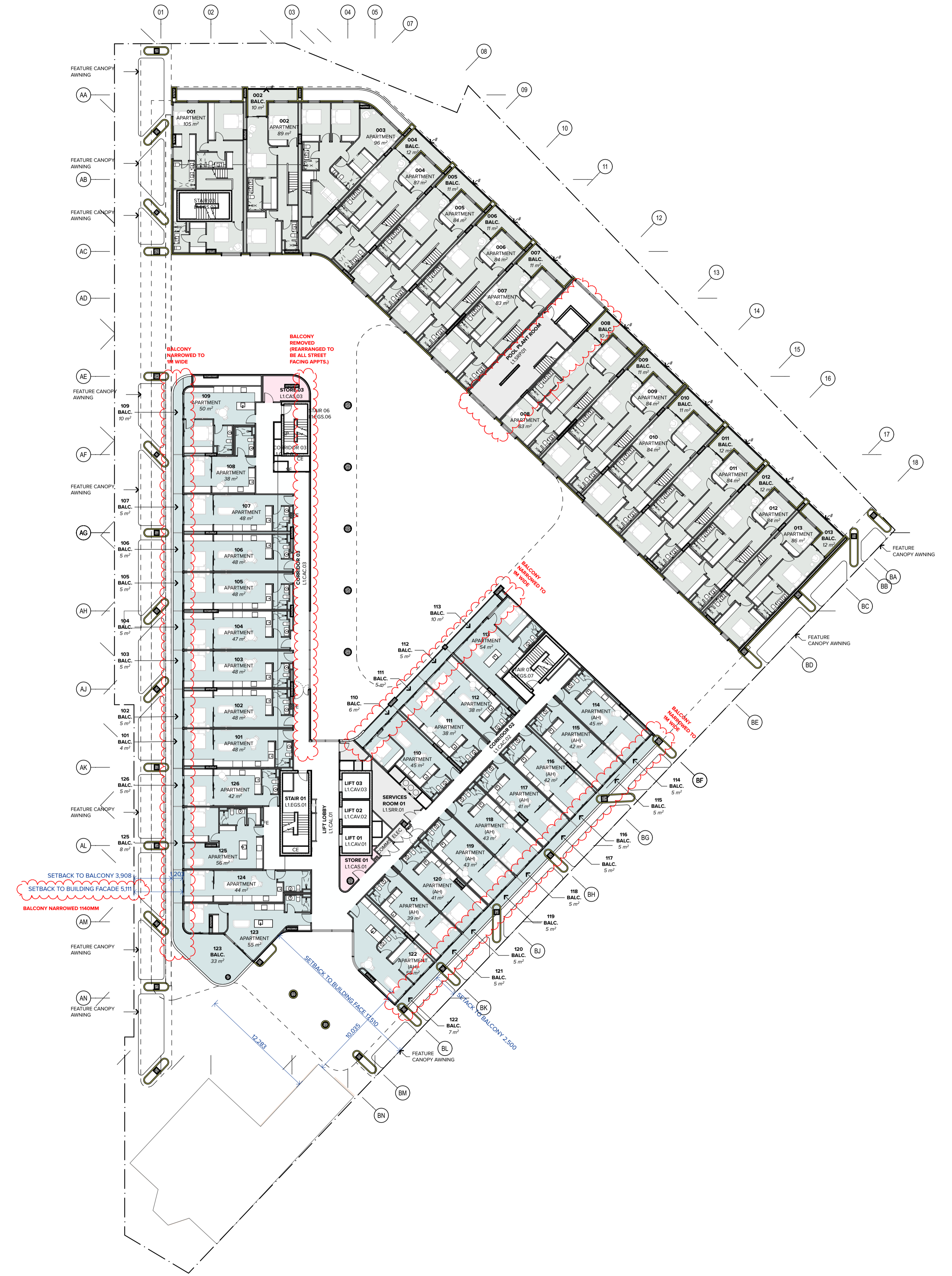


GROUND

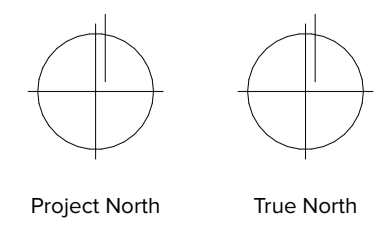


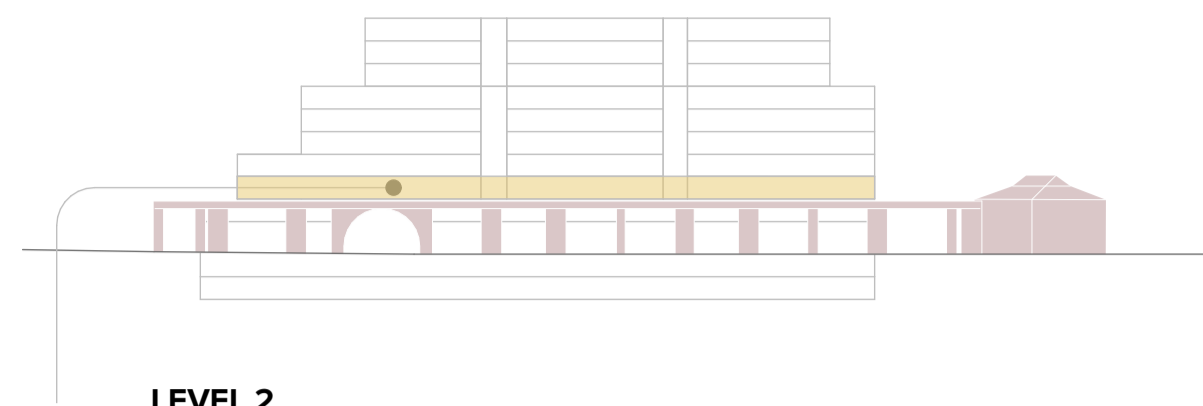
LEVEL 1

- APARTMENT
- APARTMENT (NDIS)
- APARTMENT (AFFORDABLE HOUSING)



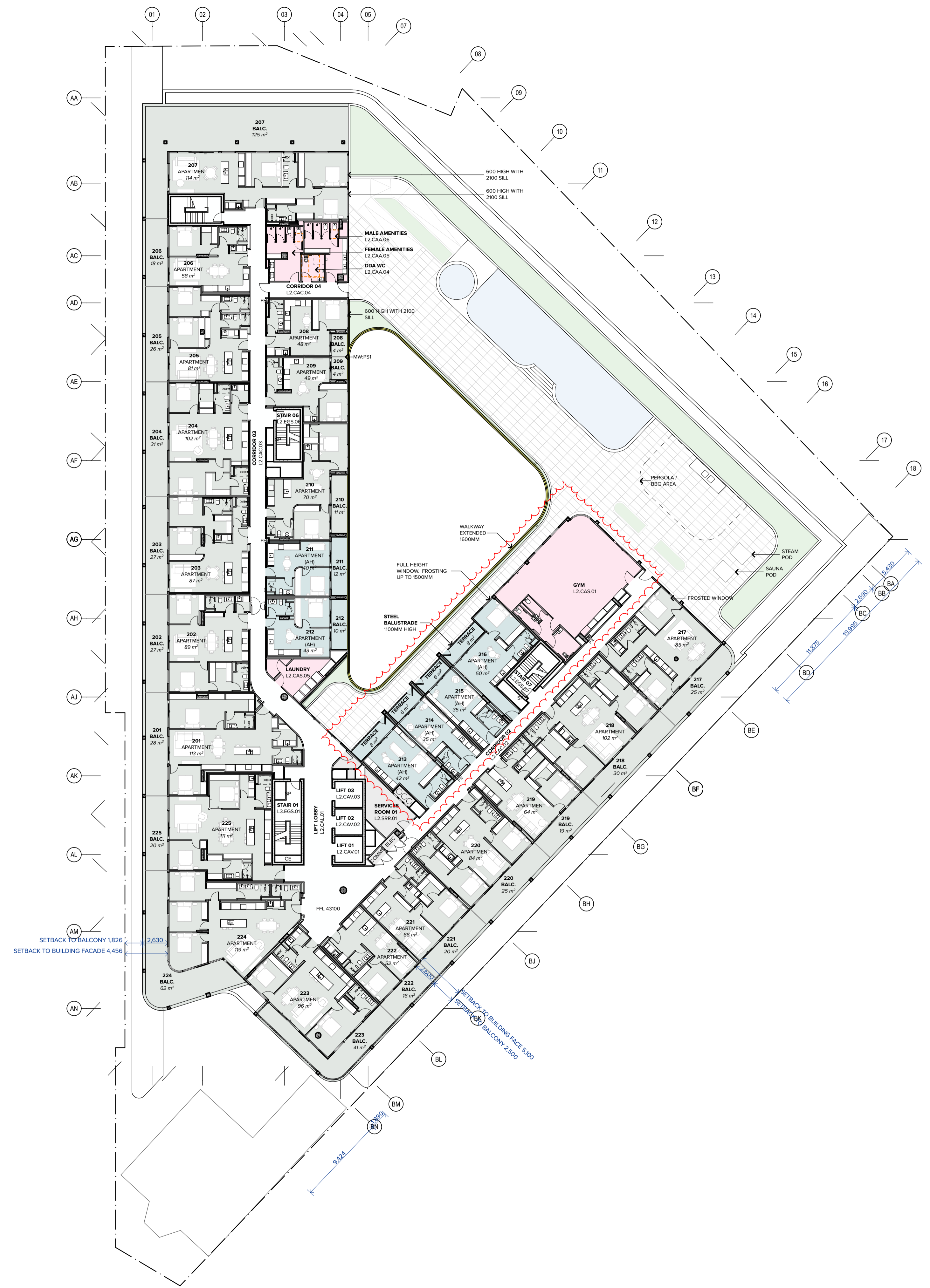
S M F A



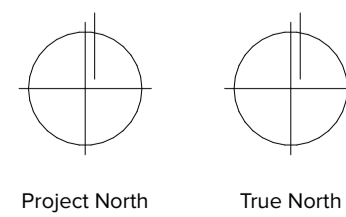


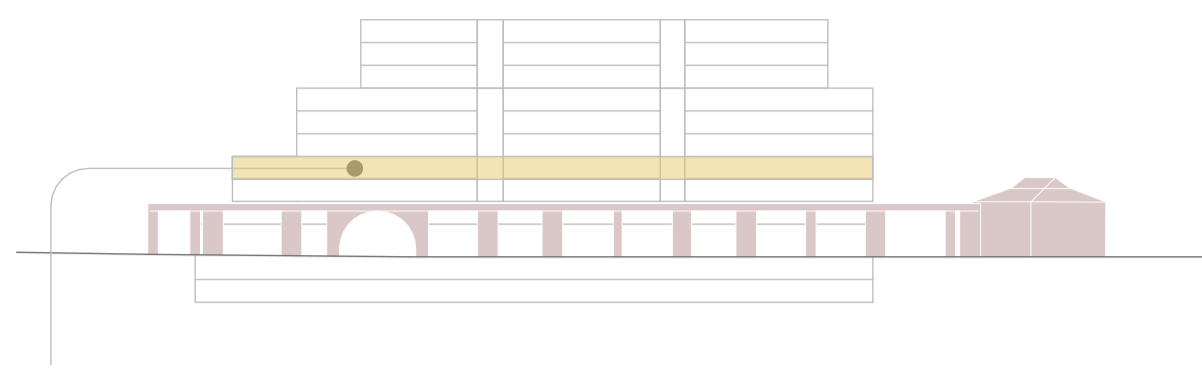
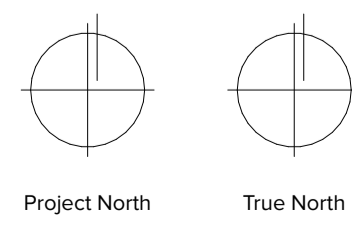
LEVEL 2

- APARTMENT
- APARTMENT (NDIS)
- APARTMENT (AFFORDABLE HOUSING)



S M F A

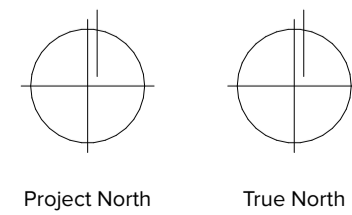




LEVEL 3

- APARTMENT
- APARTMENT (NDIS)
- APARTMENT (AFFORDABLE HOUSING)

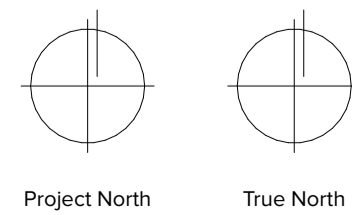




LEVEL 4

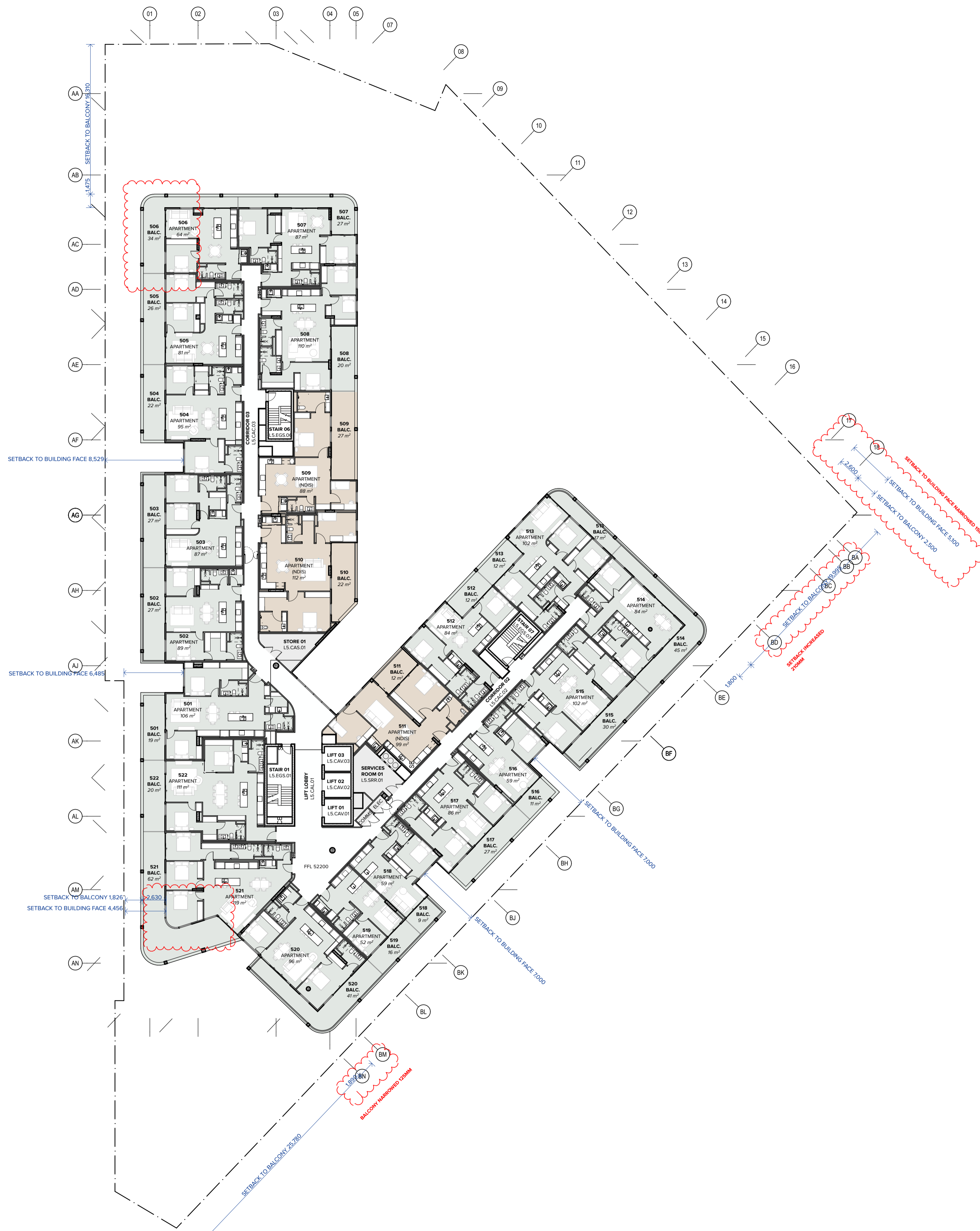
- APARTMENT
- APARTMENT (NDIS)
- APARTMENT (AFFORDABLE HOUSING)

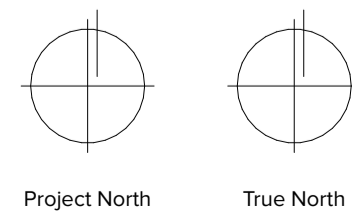




LEVEL 05

- APARTMENT
- APARTMENT (NDIS)
- APARTMENT (AFFORDABLE HOUSING)

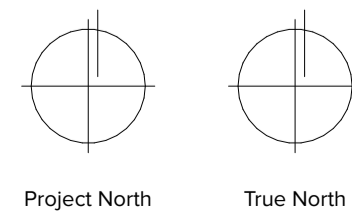




LEVEL 06

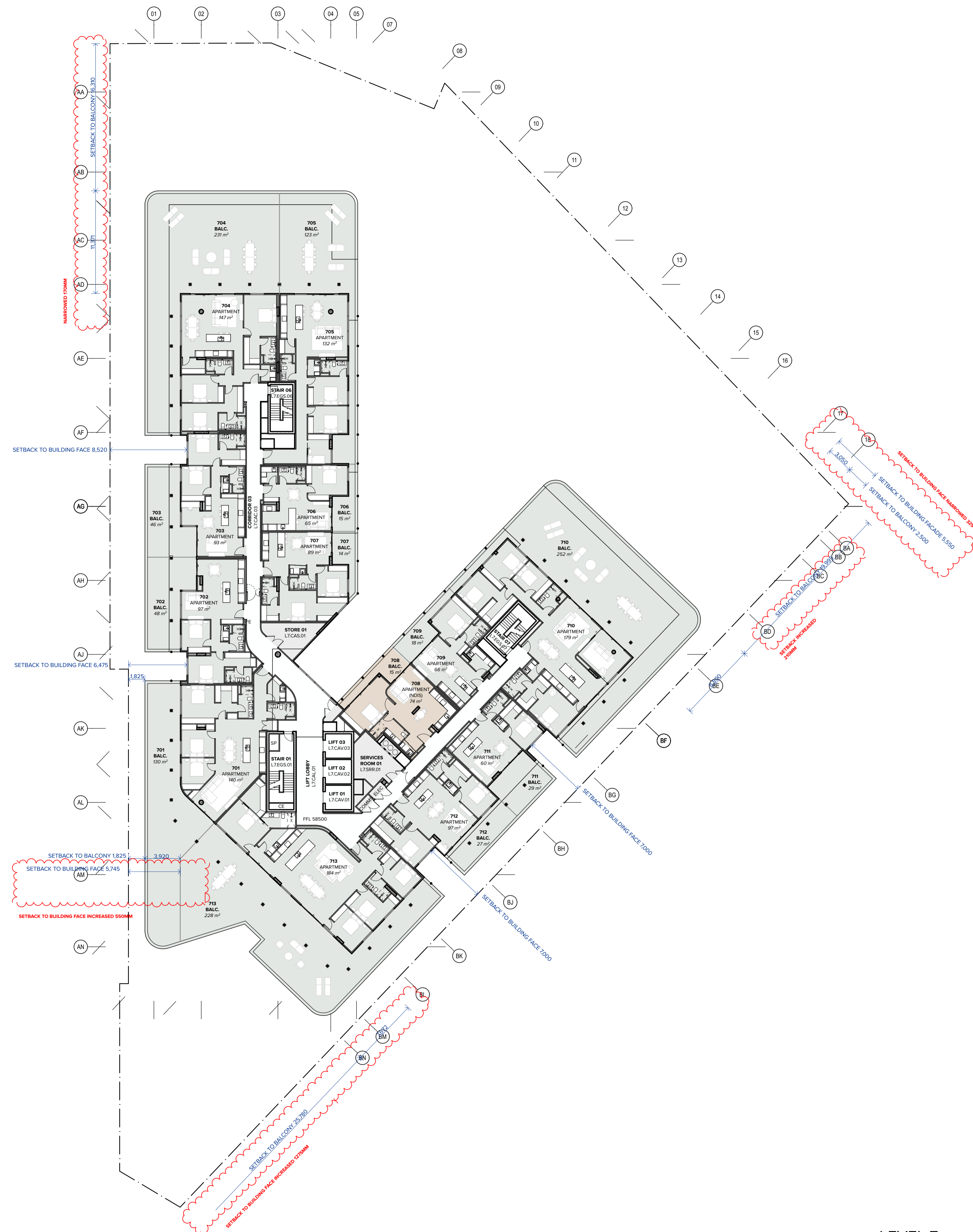
- APARTMENT
- APARTMENT (NDIS)
- APARTMENT (AFFORDABLE HOUSING)

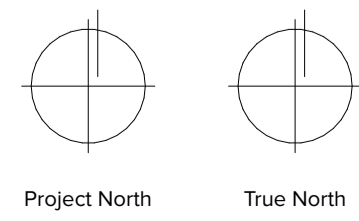




LEVEL 7

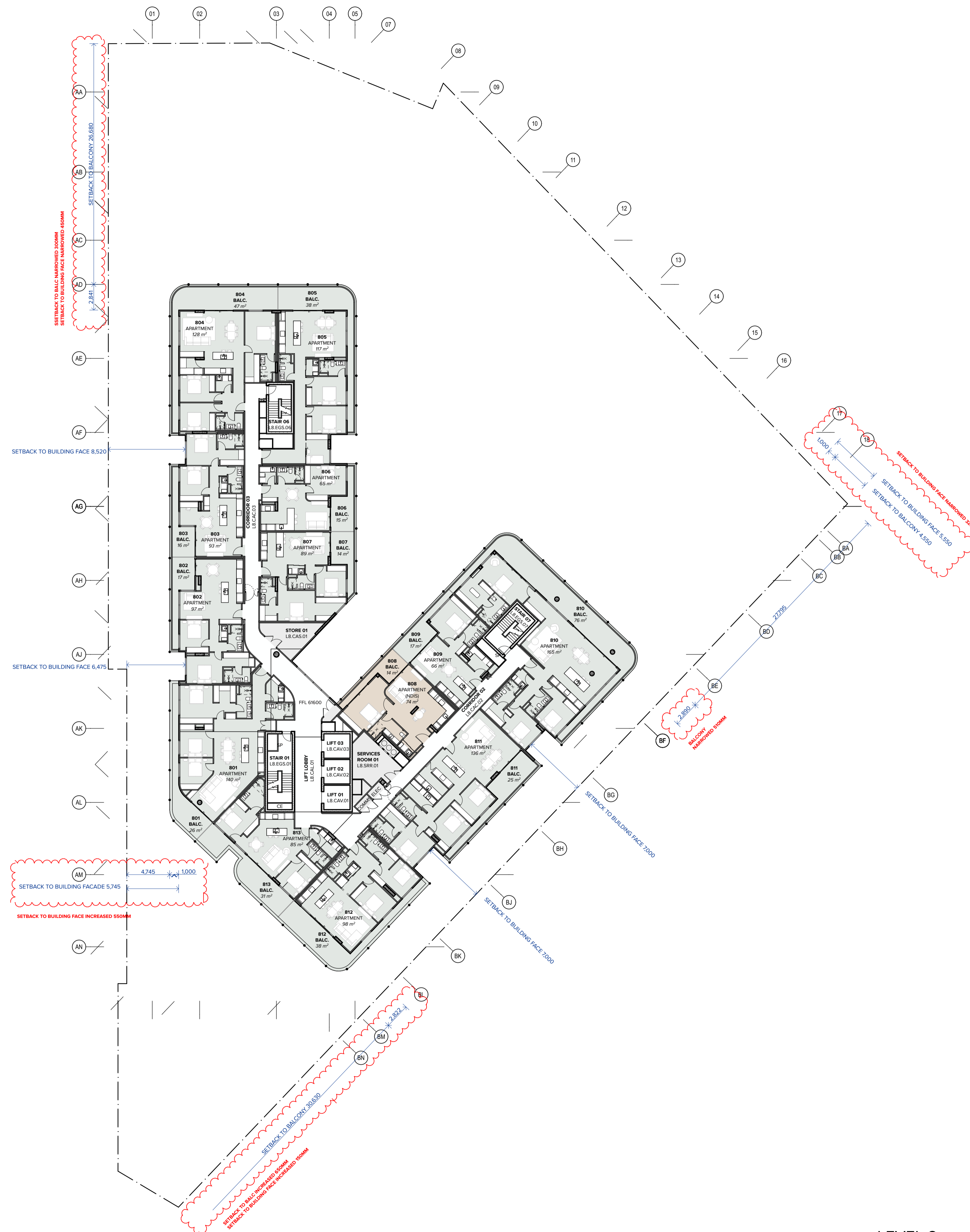
- APARTMENT
- APARTMENT (NDIS)
- APARTMENT (AFFORDABLE HOUSING)

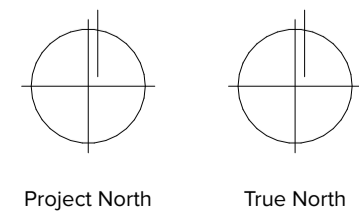




LEVEL 8

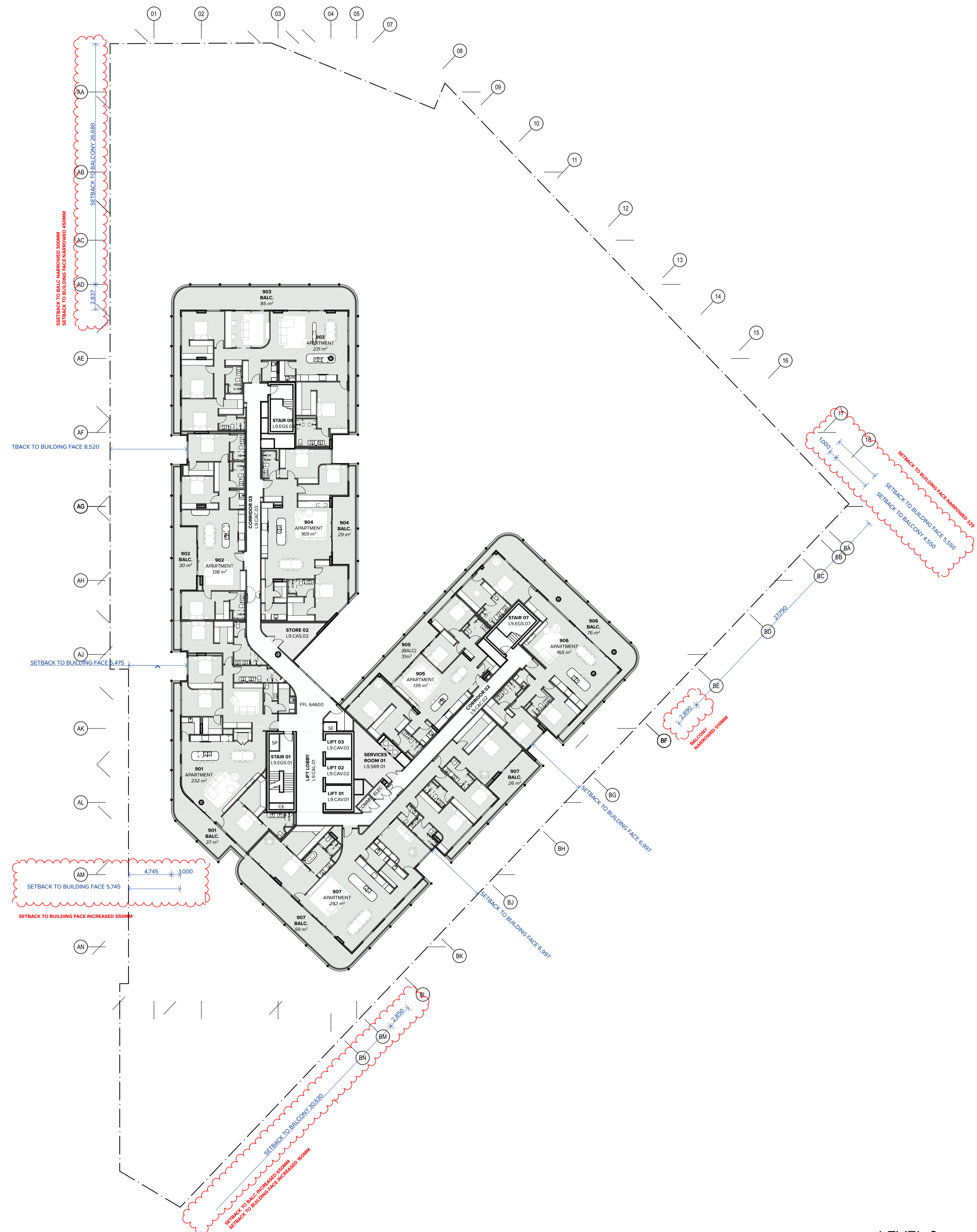
- APARTMENT
- APARTMENT (NDIS)
- APARTMENT (AFFORDABLE HOUSING)

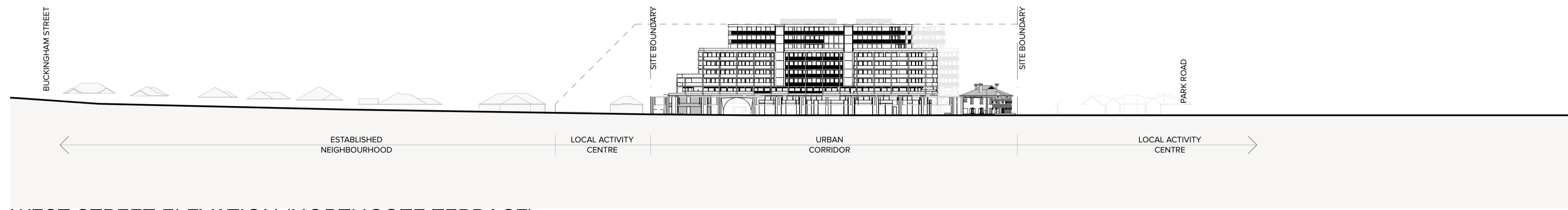




LEVEL 9

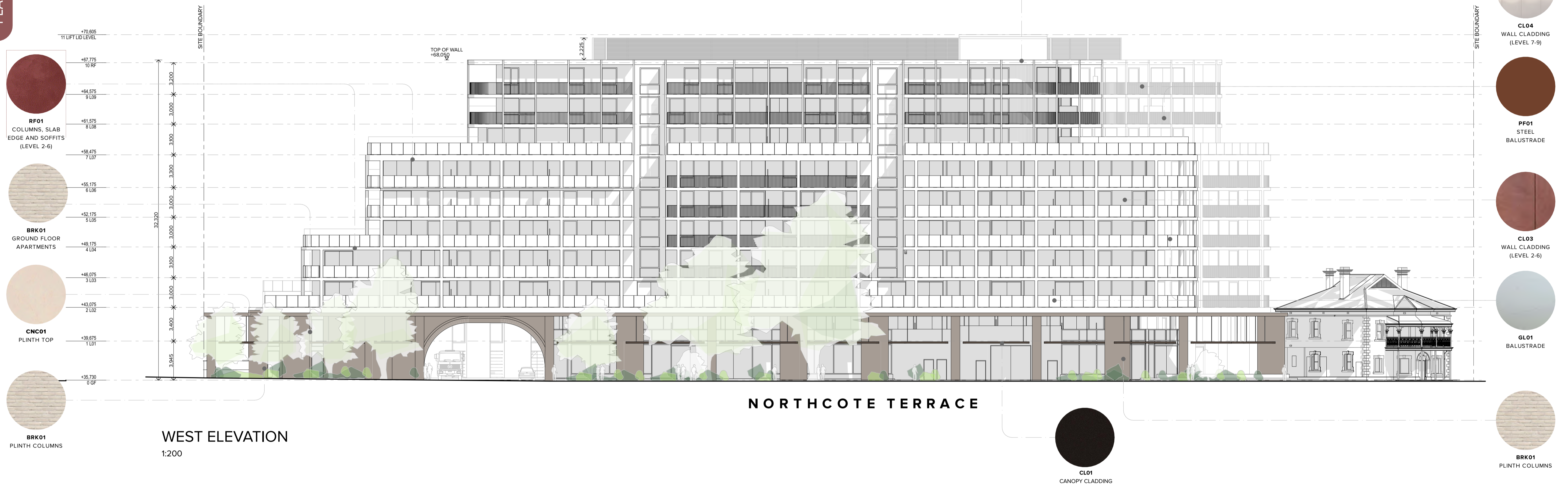
- APARTMENT
- APARTMENT (NDIS)
- APARTMENT (AFFORDABLE HOUSING)





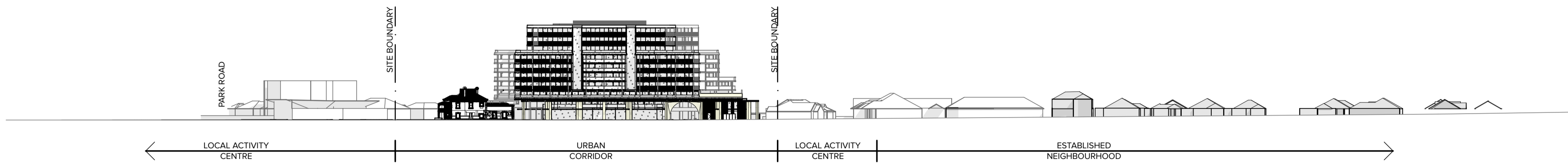
WEST STREET ELEVATION (NORTHCOTE TERRACE)

1:1000



MATERIALS

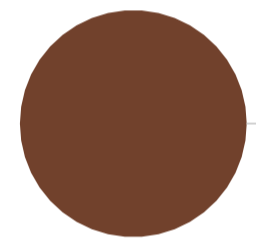




**CL04**  
WALL CLADDING  
(LEVEL 7-9)



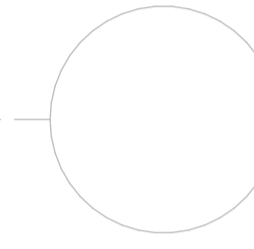
**GL01**  
BALUSTRADE



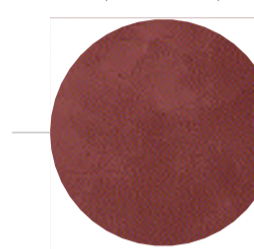
**PF01**  
STEEL  
BALUSTRADE



**GL01**  
DOOR & WINDOW



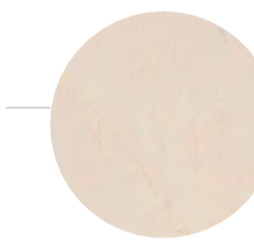
**PF02**  
COLUMNS, SLAB  
EDGE AND SOFFITS  
(LEVEL 7-9)



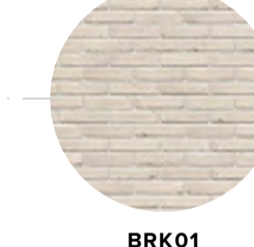
**RF01**  
COLUMNS, SLAB  
EDGE AND SOFFITS  
(LEVEL 2-6)



**BRK01**  
GROUND FLOOR  
APARTMENTS



**CNC01**  
PLINTH TOP



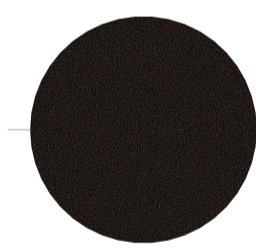
**BRK01**  
PLINTH COLUMNS



**WALKERVILLE TERRACE**

**EAST ELEVATION**

1:200



**CL01**  
CANOPY CLADDING

**MATERIALS**

GROUND FLOOR APARTMENTS

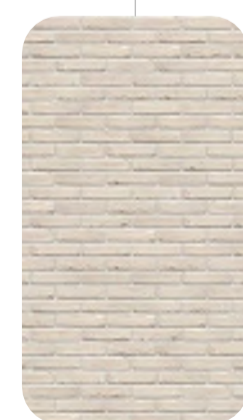
PLINTH

MID SECTION

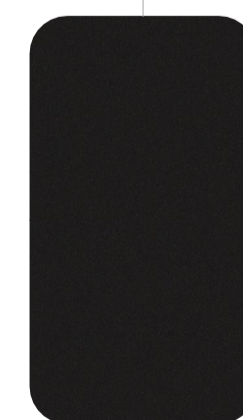
TOP



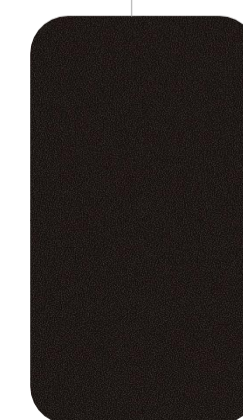
**MESH SCREEN**  
100 X 700MM  
MONUMENT



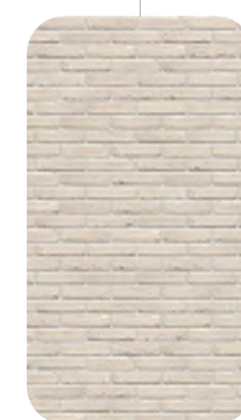
**BRK01**  
BRICK  
CREAM



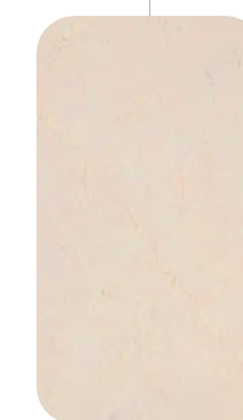
**CL02**  
ALUMINIUM CLADDING  
BLACK



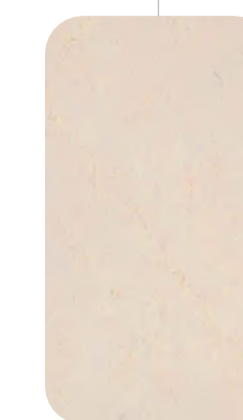
**CL01**  
METAL SHEET CLADDING  
BRONZE



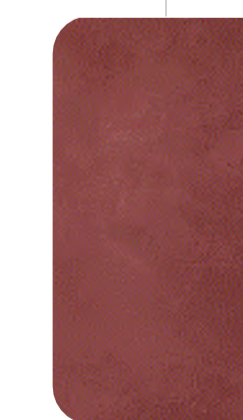
**BRK01**  
BRICK  
CREAM



**CNC01**  
CONCRETE  
WARM BEIGE



**RF02**  
MICRO-CEMENT  
WARM BEIGE



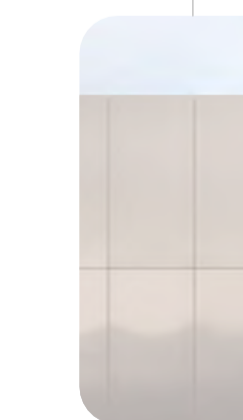
**RF01**  
COLOURED CONCRETE  
MAROON



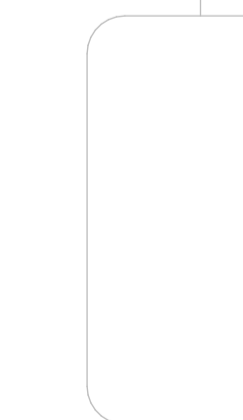
**PF01**  
POWDER COAT FINISH  
MAROON



**CL03**  
ALUMINIUM  
CLADDING  
MAROON



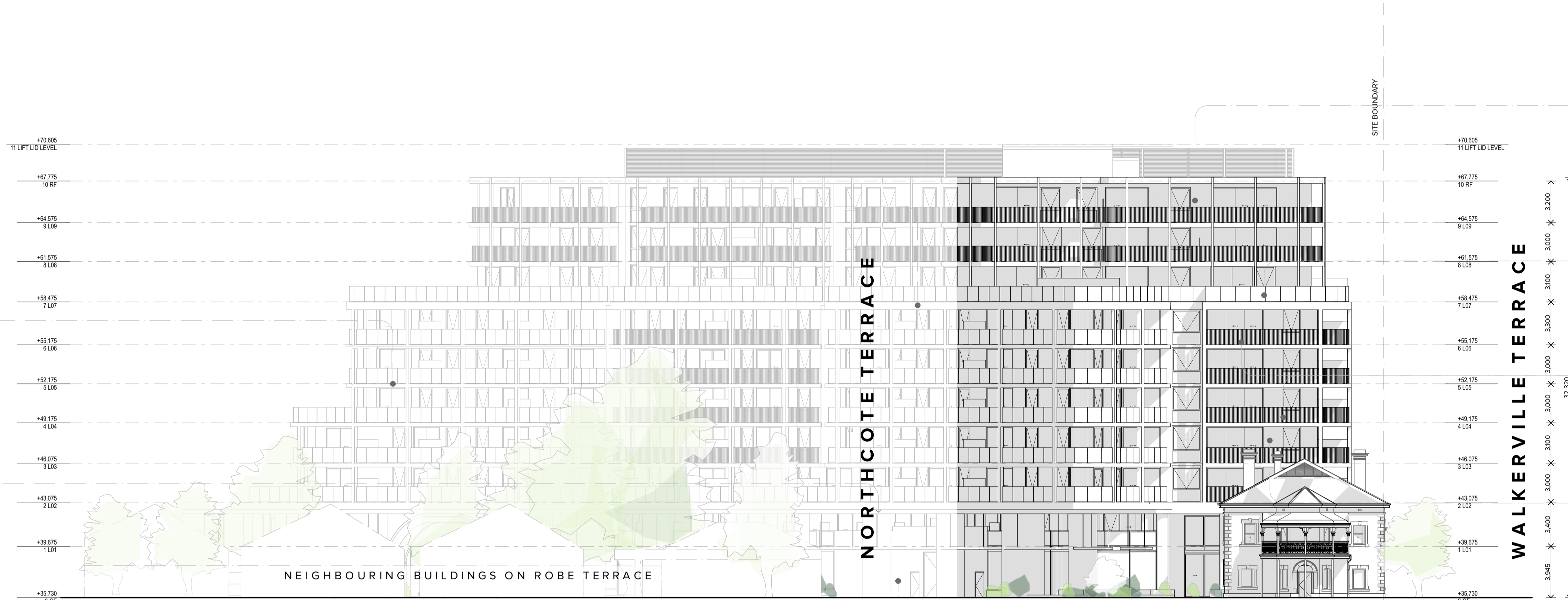
**CL04**  
ALUMINIUM  
CLADDING  
WARM BEIGE



**PF02**  
PAINTED STEEL FINISH  
WHITE



**GL01**  
GLAZING



**SOUTH ELEVATION**  
1:200

**MATERIALS**

GROUND FLOOR APARTMENTS

PLINTH

MID SECTION

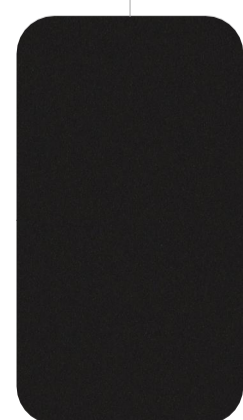
TOP



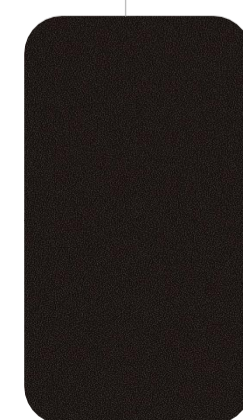
MESH SCREEN  
100 X 700MM  
MONUMENT



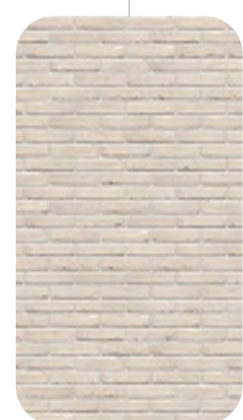
BRK01  
BRICK  
CREAM



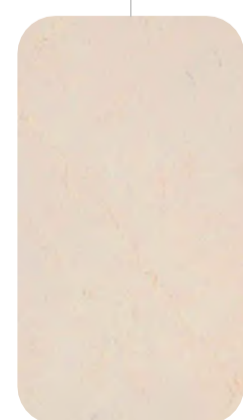
CL02  
ALUMINIUM  
CLADDING  
BLACK



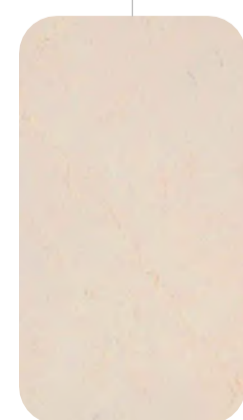
CL01  
METAL SHEET  
CLADDING  
BRONZE



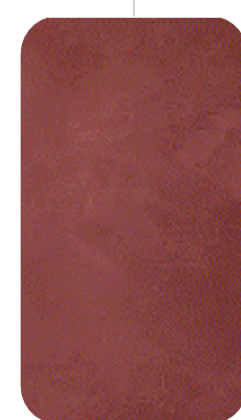
BRK01  
BRICK  
CREAM



CNC01  
CONCRETE  
WARM BEIGE



RF02  
MICRO-CEMENT  
WARM BEIGE



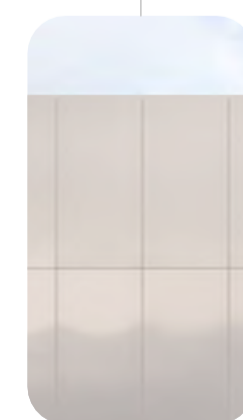
RF01  
COLOURED CONCRETE  
MAROON



PF01  
POWDER COAT FINISH  
MAROON



CL03  
ALUMINIUM  
CLADDING  
MAROON



CL04  
ALUMINIUM  
CLADDING  
WARM BEIGE



PF02  
PAINTED STEEL FINISH  
WHITE



GL01  
GLAZING



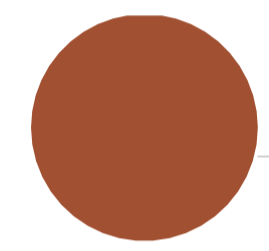
N1 NORTH ELEVATION

1:200

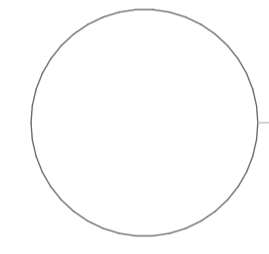


N2 NORTH ELEVATION

1:200



PF01  
STEEL  
BALUSTRADE



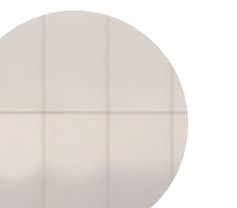
PF02  
PAINTED STEEL



CNC01  
PLINTH TOP



BRK01  
GROUND FLOOR  
APARTMENTS



CL02  
WALL CLADDING  
(LEVEL 7-9)



GL01  
BALUSTRADE



RF01  
COLUMNS, SLAB  
EDGE AND SOFFITS  
(LEVEL 2-6)



GL01  
DOOR & WINDOW

MATERIALS

GROUND FLOOR APARTMENTS

PLINTH

MID SECTION

TOP



MESH SCREEN  
100 X 700MM  
MONUMENT



BRK01  
BRICK  
CREAM



CL02  
ALUMINIUM CLADDING  
MONUMENT



CL01  
METAL SHEET CLADDING  
BRONZE KINETIC



BRK01  
BRICK  
CREAM



RF02  
MICRO-CEMENT  
WARM BEIGE TO  
MATCH SANDSTONE



RF01  
RENDER FINISH  
MAROON



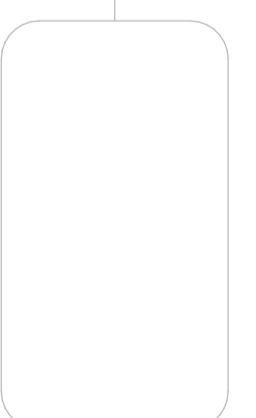
PF01  
POWDER COAT FINISH  
MAROON



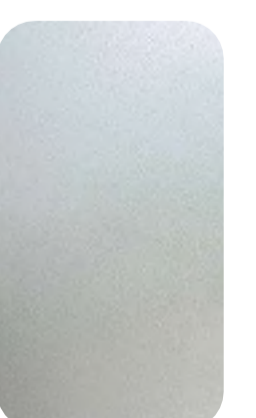
CL03  
ALUMINIUM  
CLADDING  
MAROON



CL04  
ALUMINIUM  
CLADDING  
WARM BEIGE



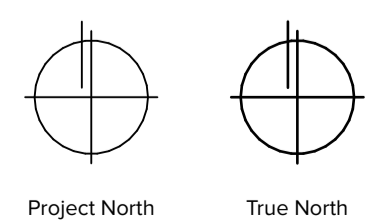
PF02  
PAINTED STEEL FINISH  
WHITE



GL01  
GLAZING

NORTH ELEVATIONS

S M F A



Project North True North

Job No.:  
24045

Site Address:  
1 WALKERVILLE TERRACE  
GILBERTON SA 5081

Project Name:  
THE BUCKINGHAM ARMS

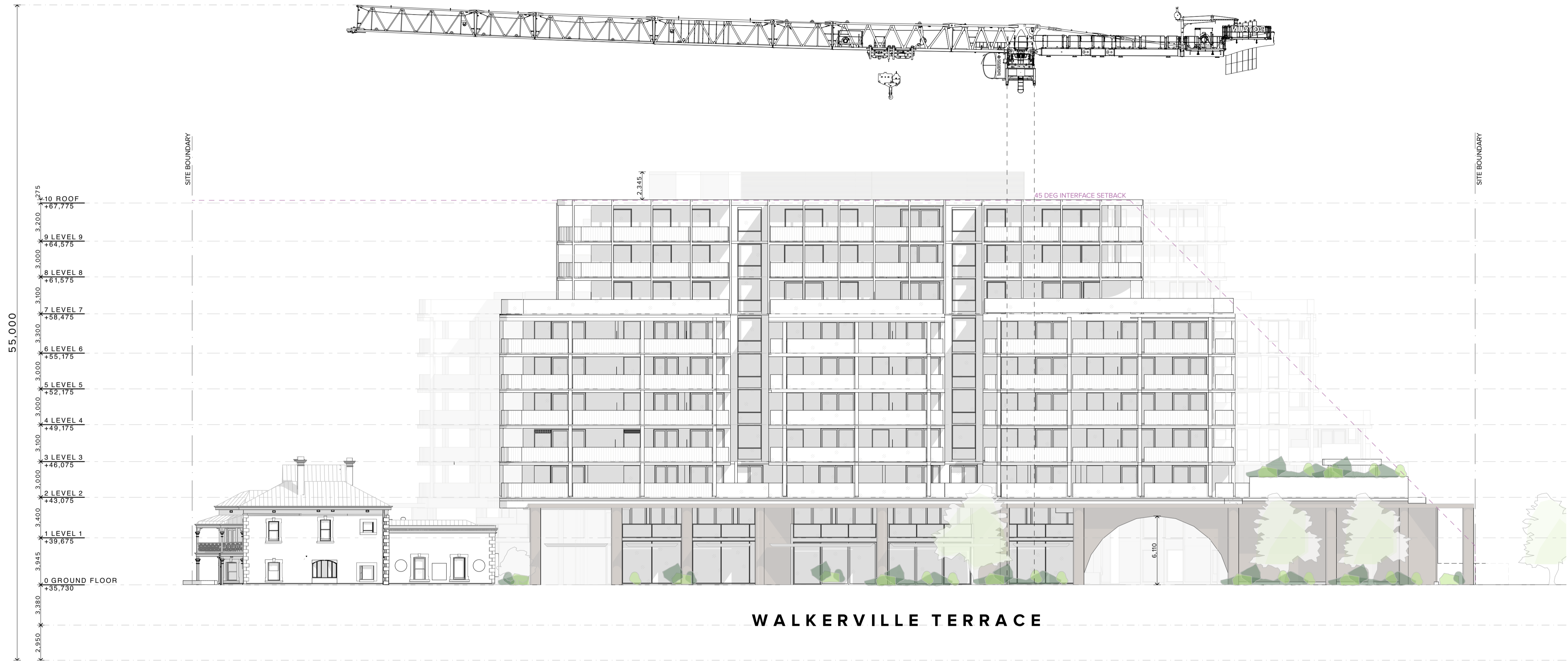
Date:  
17/12/2025

Scale:  
1:200, 1:1 @ A1

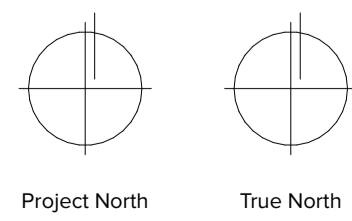
Dwg No.:  
B4.03

Dwg Issue:  
PLANNING AMENDMENT

Rev:  
12



EAST ELEVATION - CRANE OVERLAY  
1:200



NORTHCOTE TERRACE

WALKERVILLE TERRACE



DETAIL CALLOUT

