



1.0	19.05.25	issued for review
rev	date	description

archaea

site plan  
nts

These designs & drawings are copyright and the property of archaea architects pty ltd they shall not be used, reproduced or copied wholly or in part without the permission of archaea architects pty ltd. All dimensions shall be checked on site prior to construction or manufacture, any discrepancies shall be reports to archaea architects pty ltd immediately.

client	project
rumi on louth	rumi on louth louth island sa



project no.	dwg no.	revision	date
24-005	P00	1.0	may 2025
FOR APPROVAL ONLY NOT FOR CONSTRUCTION			

These designs & drawings are copyright and the property of archaea architects Pty Ltd they shall not be used, reproduced or copied wholly or in part without the permission of archaea architects Pty Ltd. All dimensions shall be checked on site prior to construction or manufacture, any discrepancies shall be reports to archaea architects Pty Ltd immediately.

client

rumi on louth

project

rumi on louth  
louth island  
sa

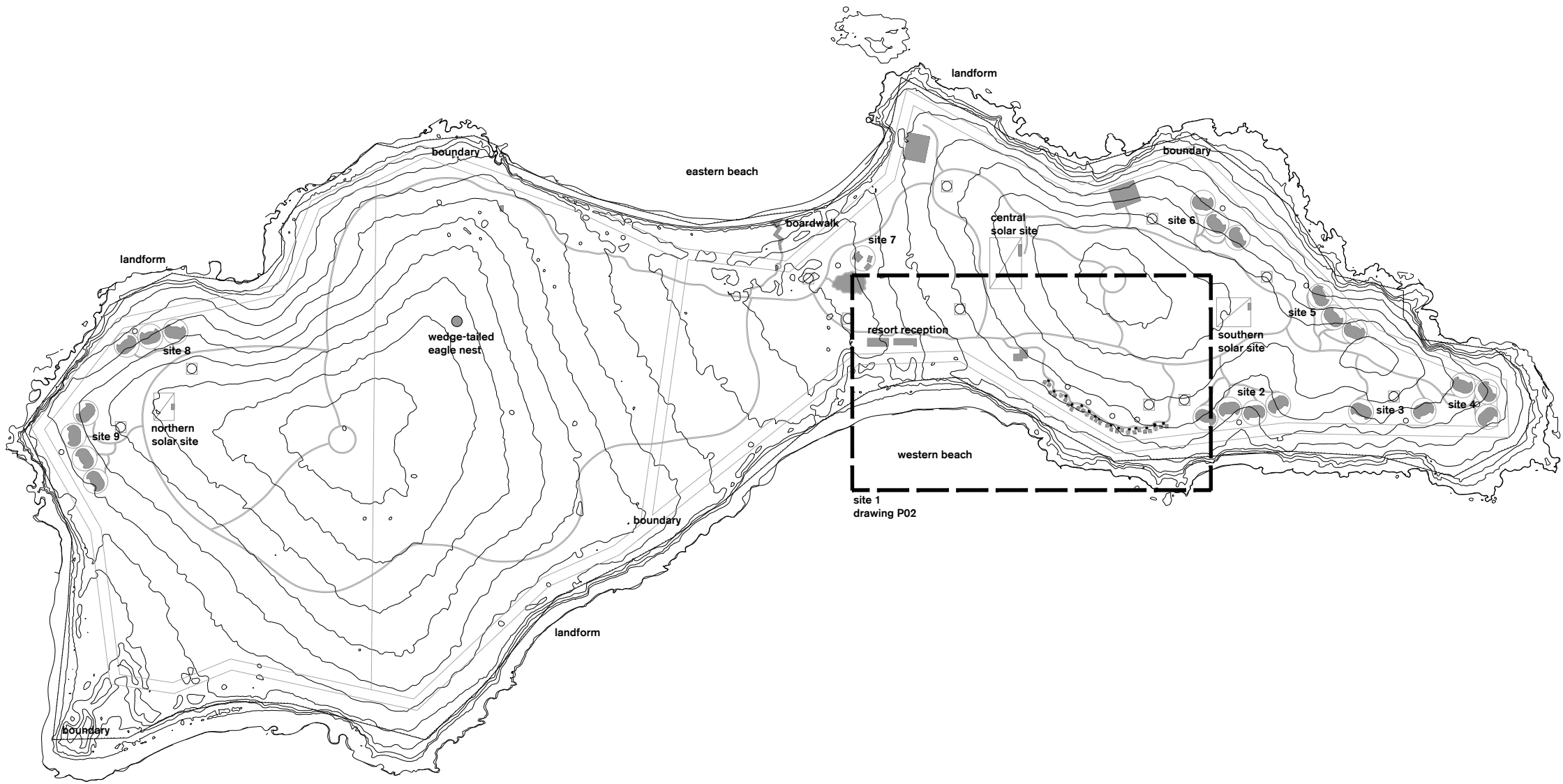
1.0 19.05.25 issued for review

rev	date	description
-----	------	-------------

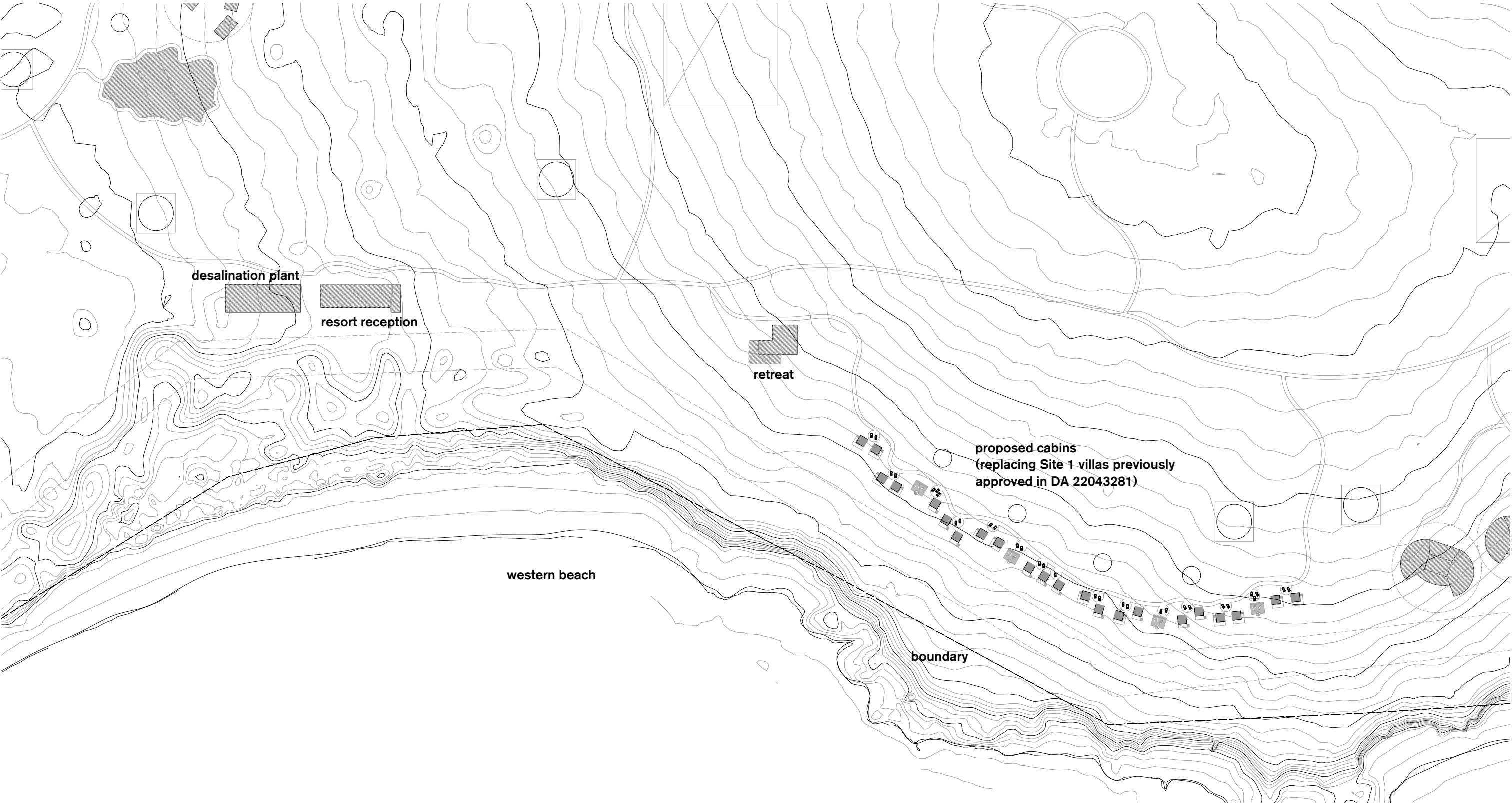
project no.	dwg no.	revision	date
-------------	---------	----------	------

24-005	P01	1.0	may 2025
--------	-----	-----	----------

FOR APPROVAL ONLY  
NOT FOR CONSTRUCTION







1.0 19.05.25 issued for review

rev	date	description
-----	------	-------------

archaea

site 1  
1:2000 @ A3

These designs & drawings are copyright and the property of archaea architects Pty Ltd they shall not be used, reproduced or copied wholly or in part without the permission of archaea architects Pty Ltd. All dimensions shall be checked on site prior to construction or manufacture, any discrepancies shall be reported to archaea architects Pty Ltd immediately.

client	project
rumi on louth	rumi on louth louth island sa



project no.	dwg no.	revision	date
24-005	P02	1.0	may 2025

FOR APPROVAL ONLY  
NOT FOR CONSTRUCTION



cabins		
	cabin footprint (exc. decking)	20
total (x22)		440
materiality	cl-01	cladding type 01 natural silvered timber
	rs-01	roof sheeting type 01 aluminium corrugated permalite or equivalent colour colorbond basalt

notes  
cabins are shown in detail typically only  
with ground line to vary once sited  
accurately  
all areas given in sqm  
all areas are approximate only  
all cabins connected to approved septic  
and wastewater system on site  
all cabins connected to existing  
desalination plant  
all cabins connected to existing power  
supply on site

t1 - type 1  
t1m - type 1 mirrored  
t2 - type 2

1.0 19.05.25 issued for review

rev	date	description
-----	------	-------------

archaea

footprint cabins

1:500 @ A3

These designs & drawings are copyright and the property of archaea architects pty ltd they shall not be used, reproduced or copied wholly or in part without the permission of archaea architects pty ltd. All dimensions shall be checked on site prior to construction or manufacture, any discrepancies shall be reports to archaea architects pty ltd immediately.

client

rumi on louth

project

rumi on louth  
louth island  
sa



project no.	dwg no.	revision	date
-------------	---------	----------	------

24-005	P03	1.0	may 2025
--------	-----	-----	----------

FOR APPROVAL ONLY  
NOT FOR CONSTRUCTION



cabins		
	cabin footprint (exc. decking)	20
total (x22)		440
materiality		
cl-01	cladding type 01	natural silvered timber
rs-01	roof sheeting type 01	aluminium corrugated permalite or equivalent colour colorbond basalt

notes  
cabins are shown in detail typically only with ground line to vary once sited accurately  
all areas given in sqm  
all areas are approximate only  
all cabins connected to approved septic and wastewater system on site  
all cabins connected to existing desalination plant  
all cabins connected to existing power supply on site

- t1 - type 1
- t1 m - type 1 mirrored
- t2 - type 2

1.0 19.05.25 issued for review

rev	date	description
-----	------	-------------

archaea

footprint cabins cont.

1:500 @ A3

These designs & drawings are copyright and the property of archaea architects pty ltd they shall not be used, reproduced or copied wholly or in part without the permission of archaea architects pty ltd. All dimensions shall be checked on site prior to construction or manufacture, any discrepancies shall be reports to archaea architects pty ltd immediately.

client

rumi on louth

project

rumi on louth  
louth island  
sa

project no.

24-005

dwg no.

P04

revision

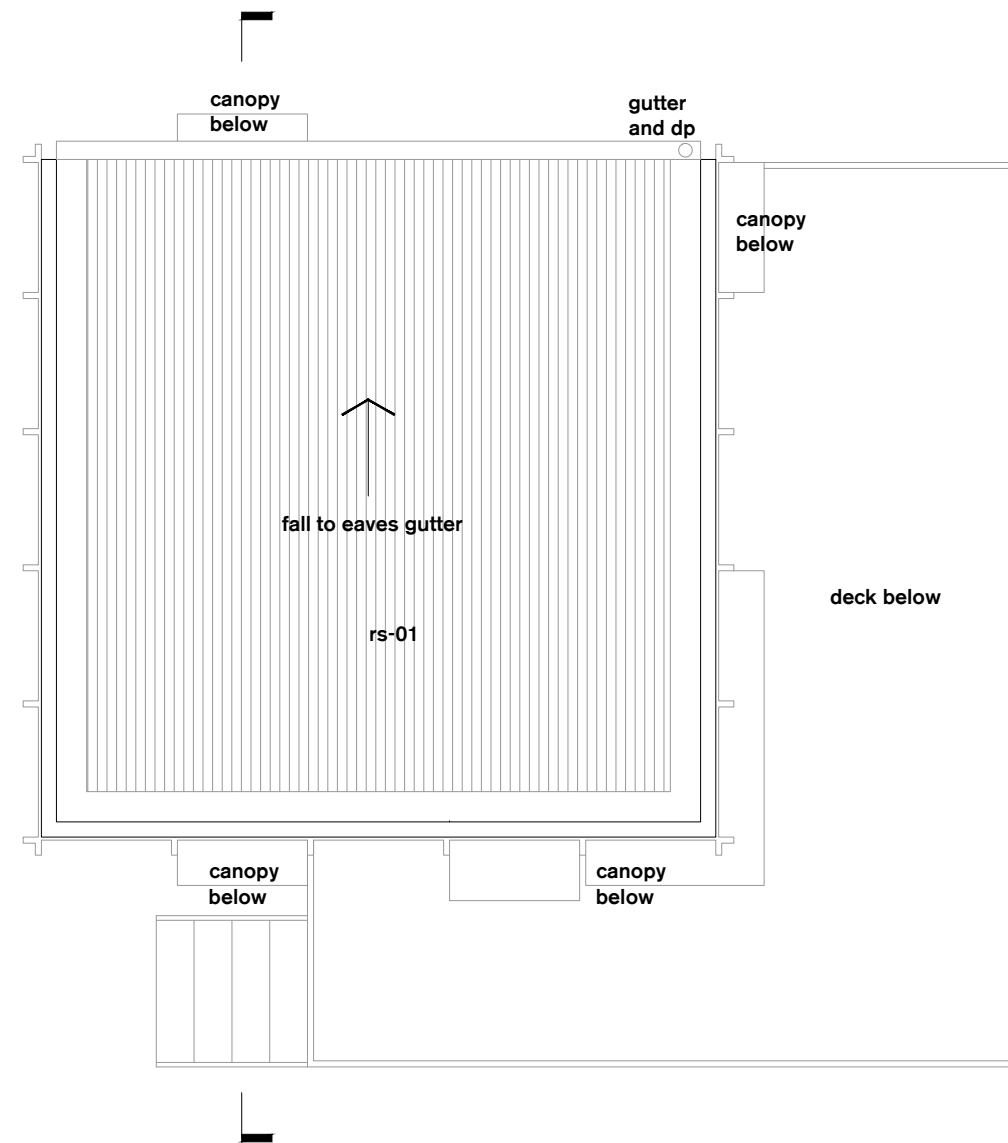
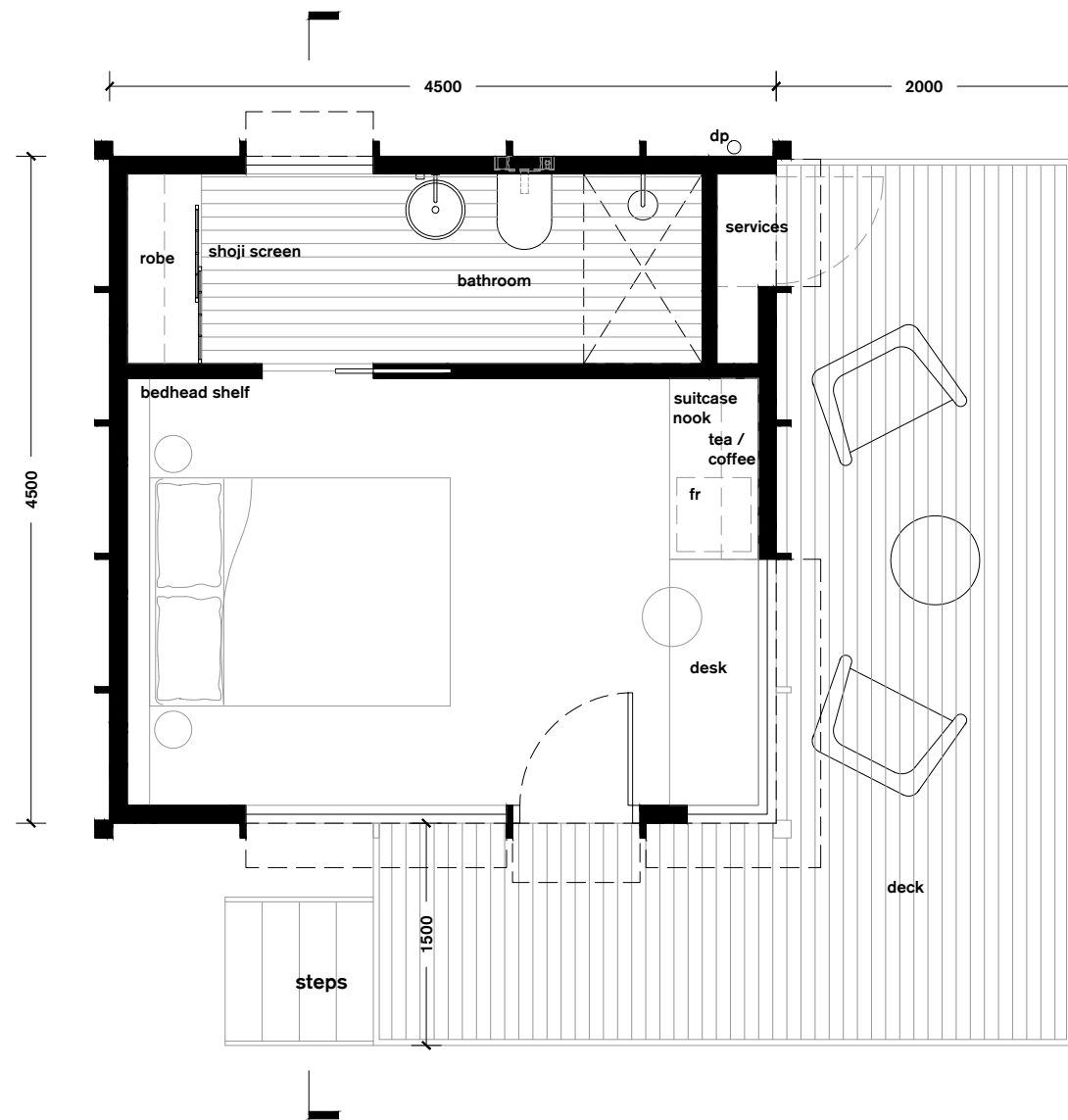
1.0


date

may  
2025



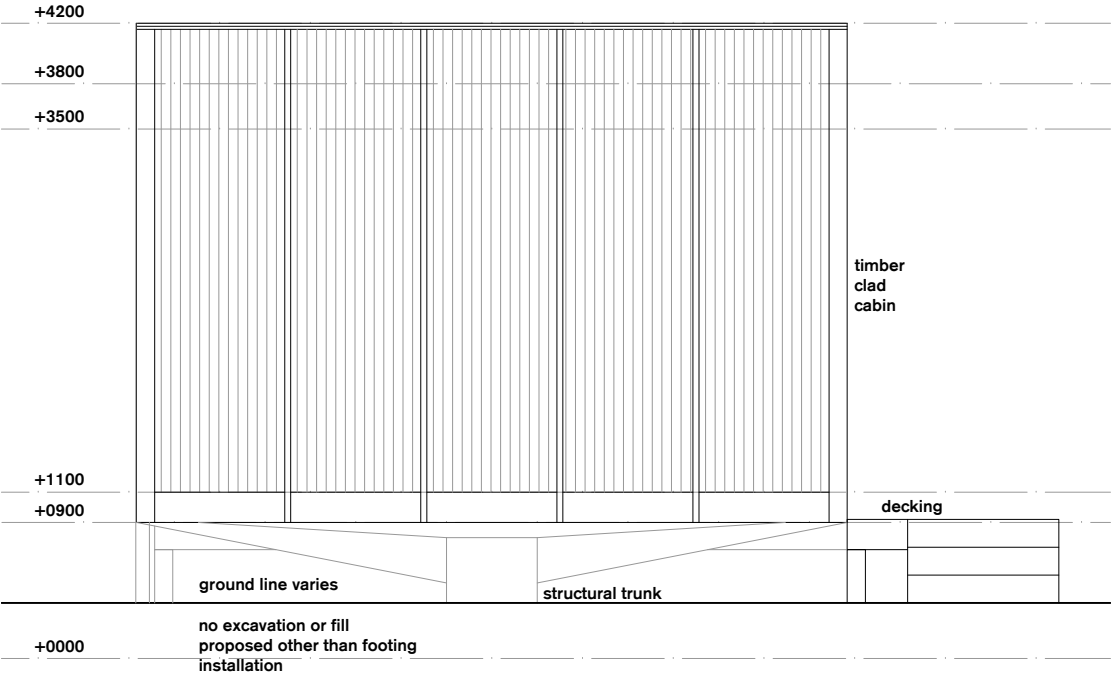
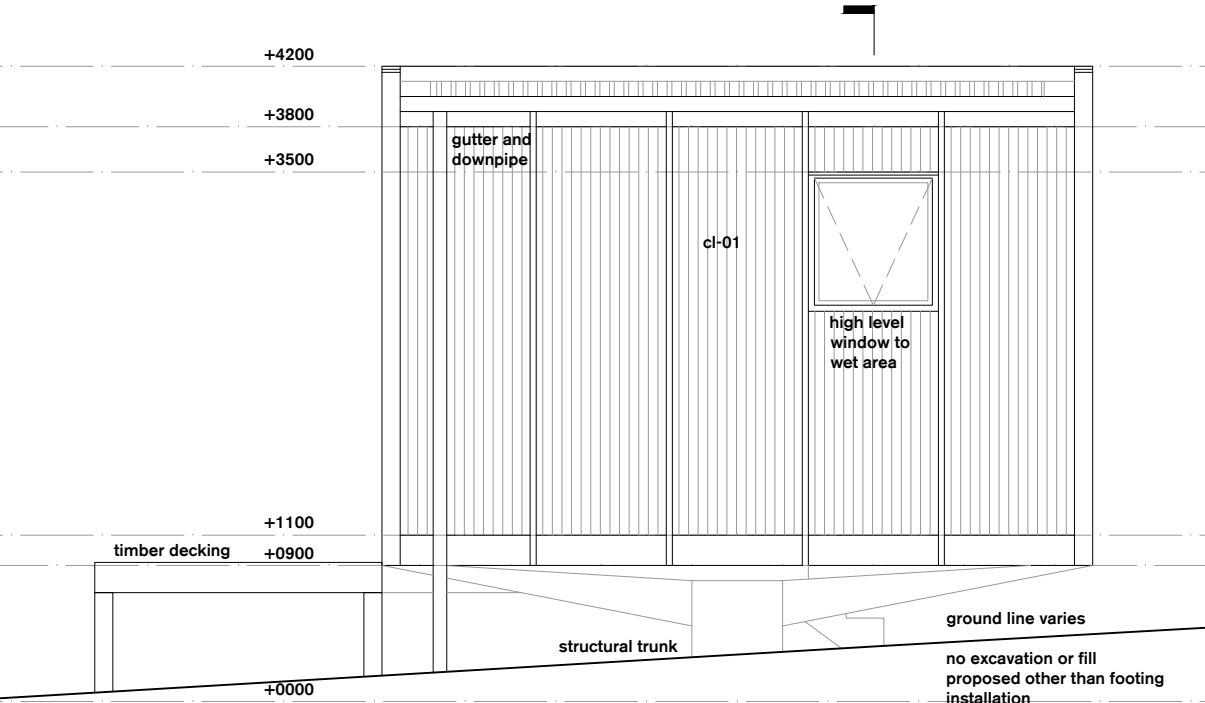
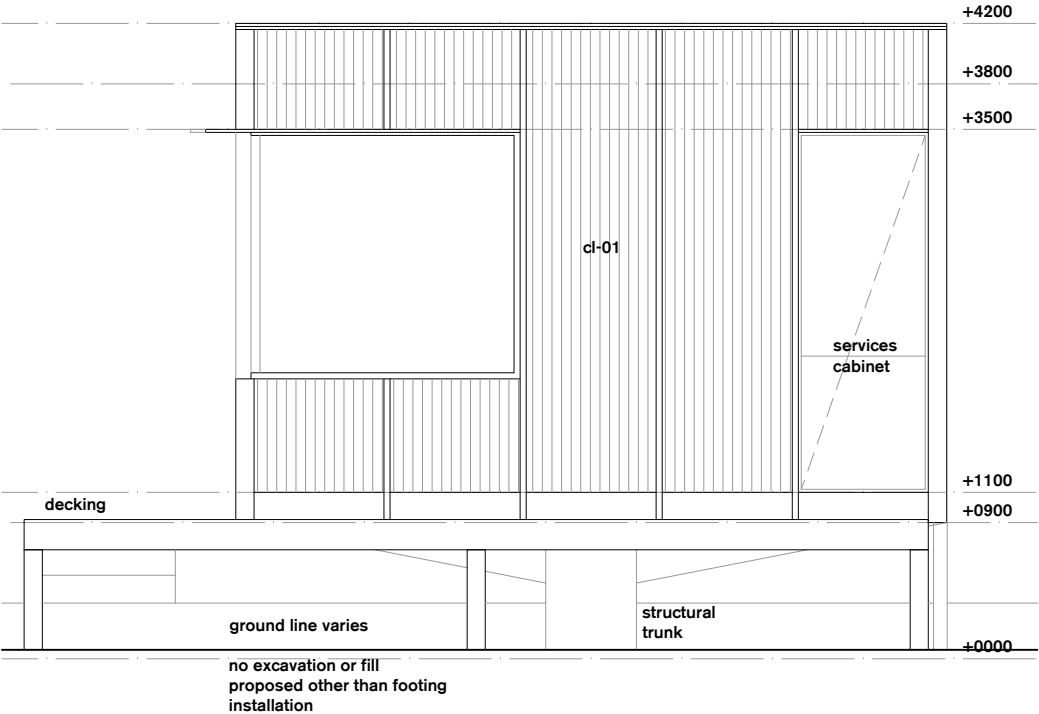
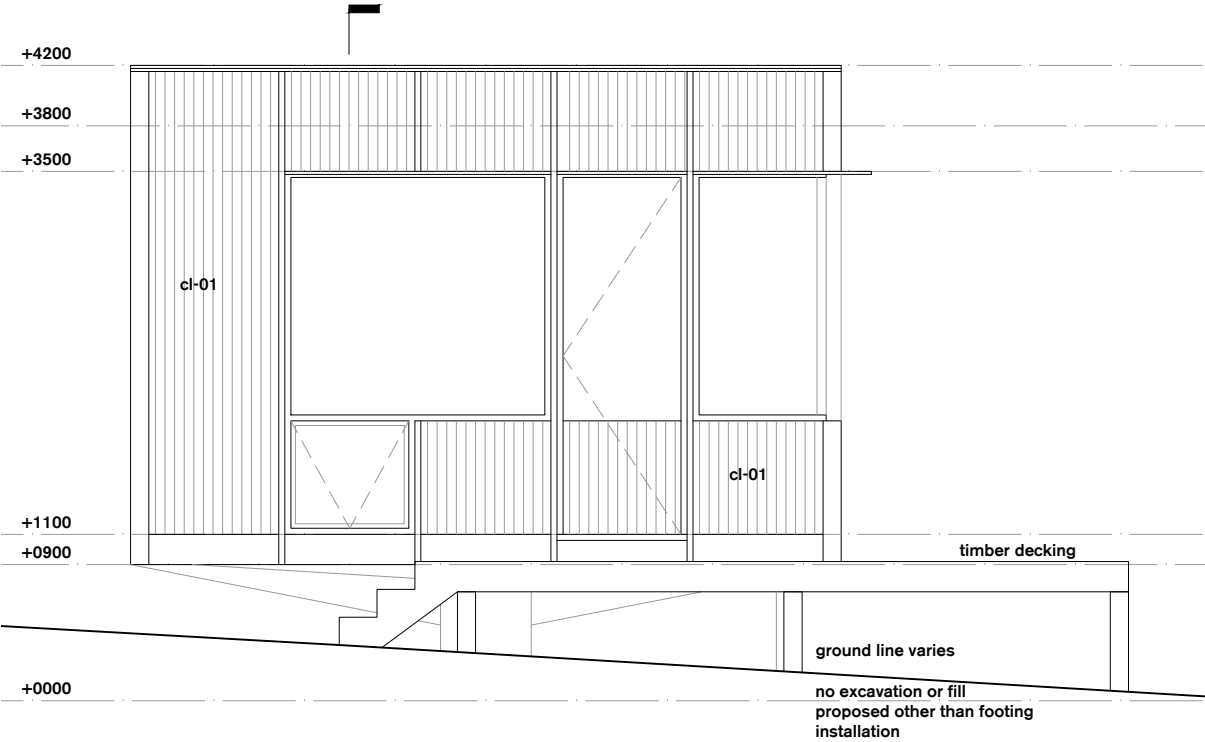
FOR APPROVAL ONLY  
NOT FOR CONSTRUCTION



<b>cabins</b>	
	<b>cabin footprint (exc. decking)</b>
	<b>20</b>
	<b>total (x22)</b>
	<b><u>440</u></b>
<b>materiality</b>	
<b>cl-01</b>	<b>cladding type 01</b>
	<b>natural silvered</b>
	<b>timber</b>
<b>rs-01</b>	<b>roof sheeting type 01</b>
	<b>aluminium corrugated</b>
	<b>perlmalite or equivalent</b>
	<b>colour colorbond basalt</b>

notes  
cabins are shown in detail typically only  
with ground line to vary once sited  
accurately  
all areas given in sqm  
all areas are approximate only  
all cabins connected to approved septic  
and wastewater system on site  
all cabins connected to existing  
desalination plant  
all cabins connected to existing power  
supply on site

```
t1 - type 1
t1m - type 1 mirrored
t2 - type 2
```



cabins		
	cabin footprint (exc. decking)	20
total (x22)		440
materiality		
cl-01	cladding type 01	natural silvered timber
rs-01	roof sheeting type 01	aluminium corrugated permalite or equivalent colour colorbond basalt

notes  
cabins are shown in detail typically only with ground line to vary once sited accurately  
all areas given in sqm  
all areas are approximate only  
all cabins connected to approved septic and wastewater system on site  
all cabins connected to existing desalination plant  
all cabins connected to existing power supply on site

t1 - type 1  
t1m - type 1 mirrored  
t2 - type 2

archaea

cabin t1

1:50 @ A3

These designs & drawings are copyright and the property of archaea architects pty ltd they shall not be used, reproduced or copied wholly or in part without the permission of archaea architects pty ltd. All dimensions shall be checked on site prior to construction or manufacture, any discrepancies shall be reports to archaea architects pty ltd immediately.

client

rumi on louth

project

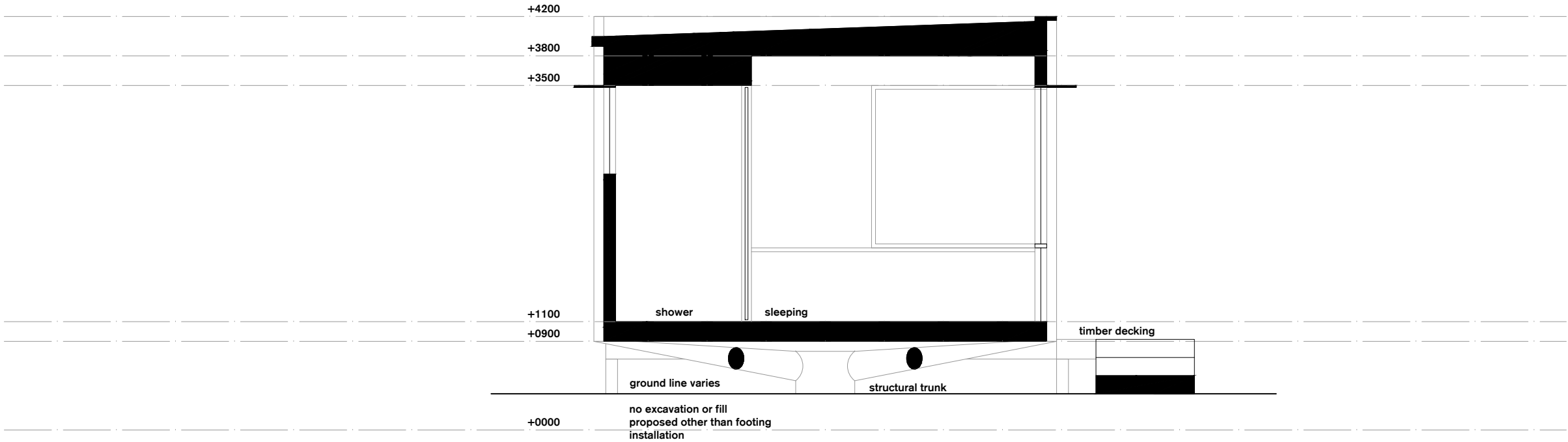
cabins  
rumi resort

1.0 19.05.25 issued for review

rev	date	description
-----	------	-------------

project no.	dwg no.	revision	date
24-005	Pc02	1.0	may 2025

FOR APPROVAL ONLY  
NOT FOR CONSTRUCTION

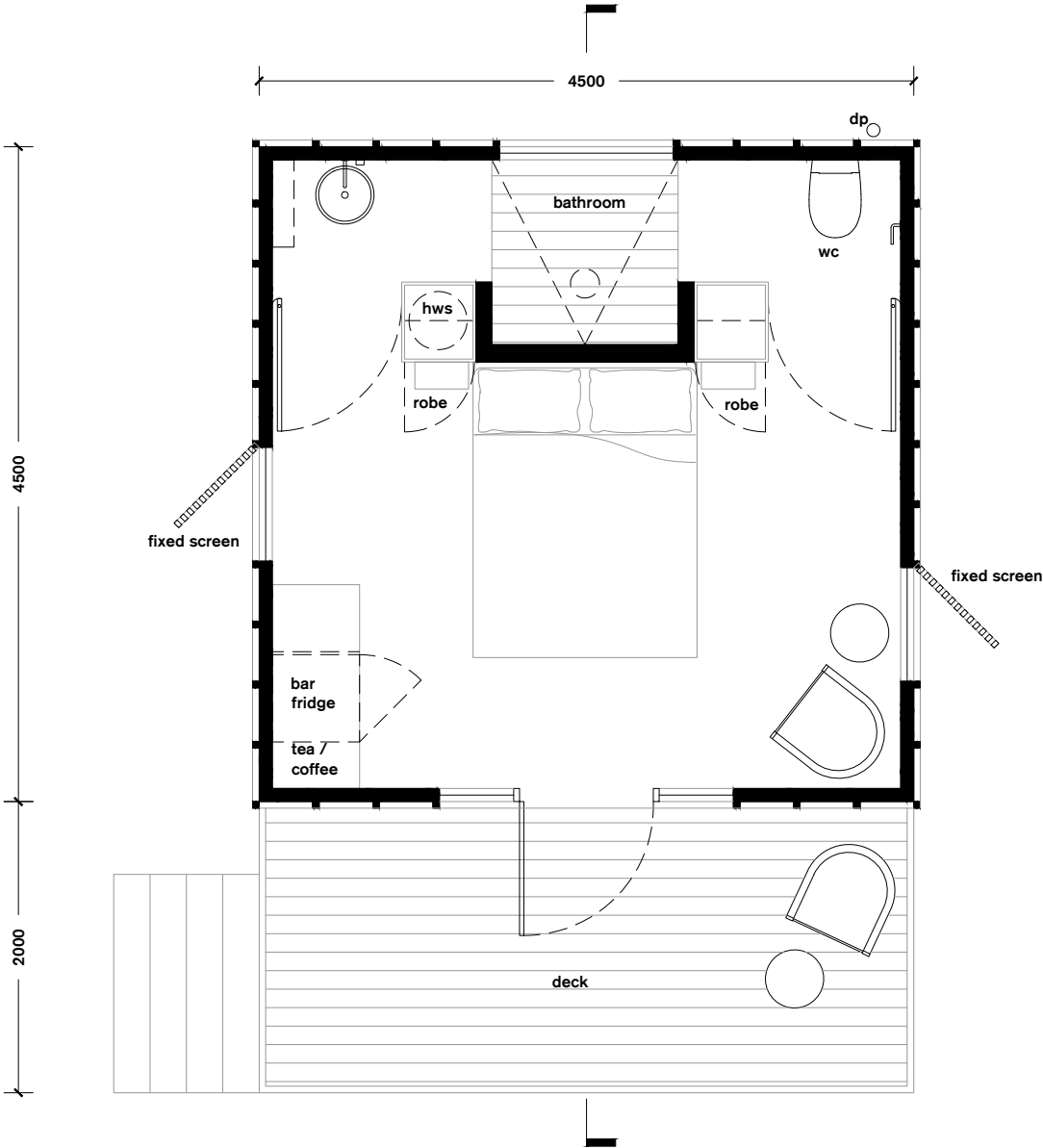


cabins		
<div></div>	cabin footprint (exc. decking)	20
total (x22)		440
materiality		
cl-01	cladding type 01 natural silvered timber	
rs-01	roof sheeting type 01 aluminium corrugated permalite or equivalent colour colorbond basalt	

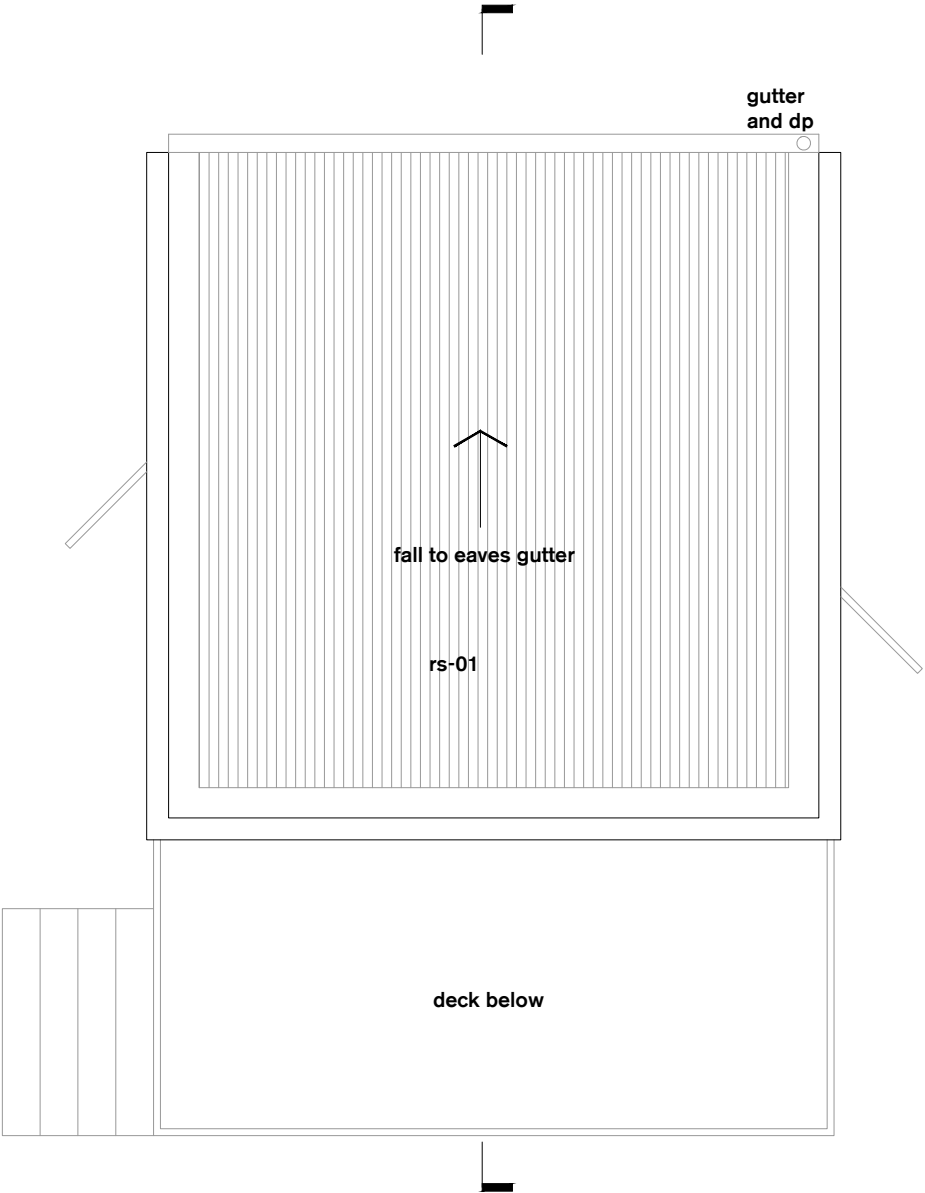
notes  
cabins are shown in detail typically only  
with ground line to vary once sited  
accurately  
all areas given in sqm  
all areas are approximate only  
all cabins connected to approved septic  
and wastewater system on site  
all cabins connected to existing  
desalination plant  
all cabins connected to existing power  
supply on site

t1 - type 1  
t1m - type 1 mirrored  
t2 - type 2





floor plan

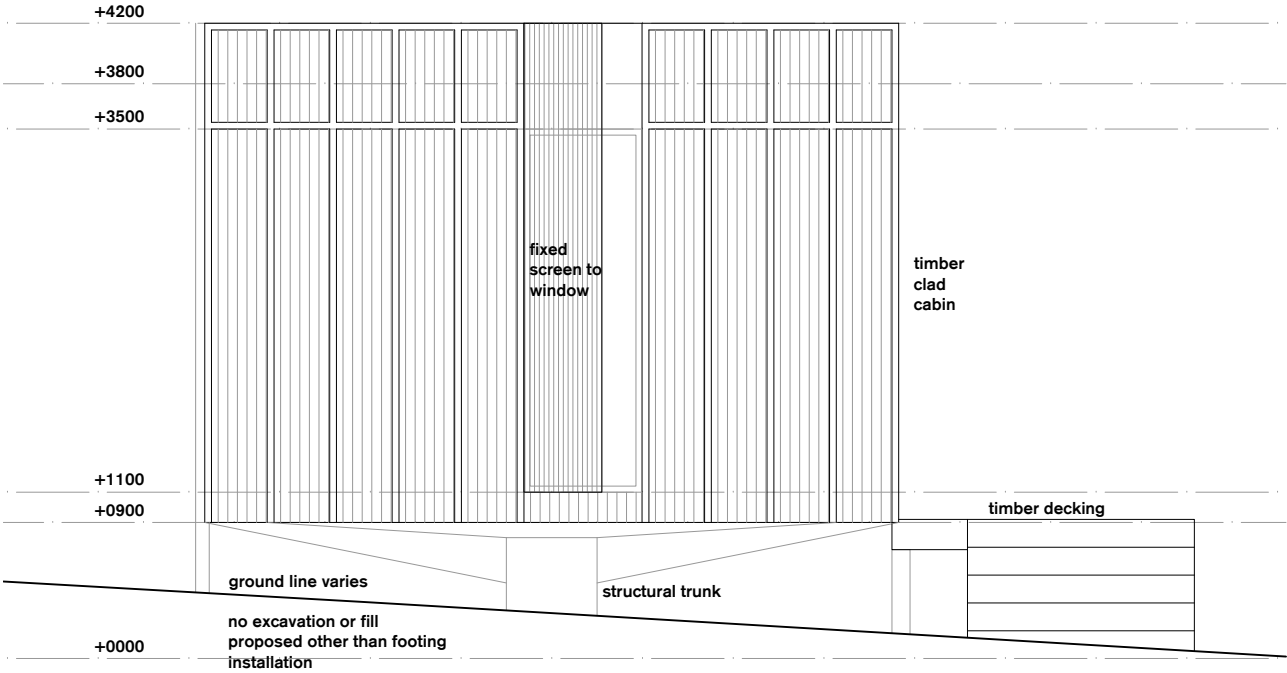
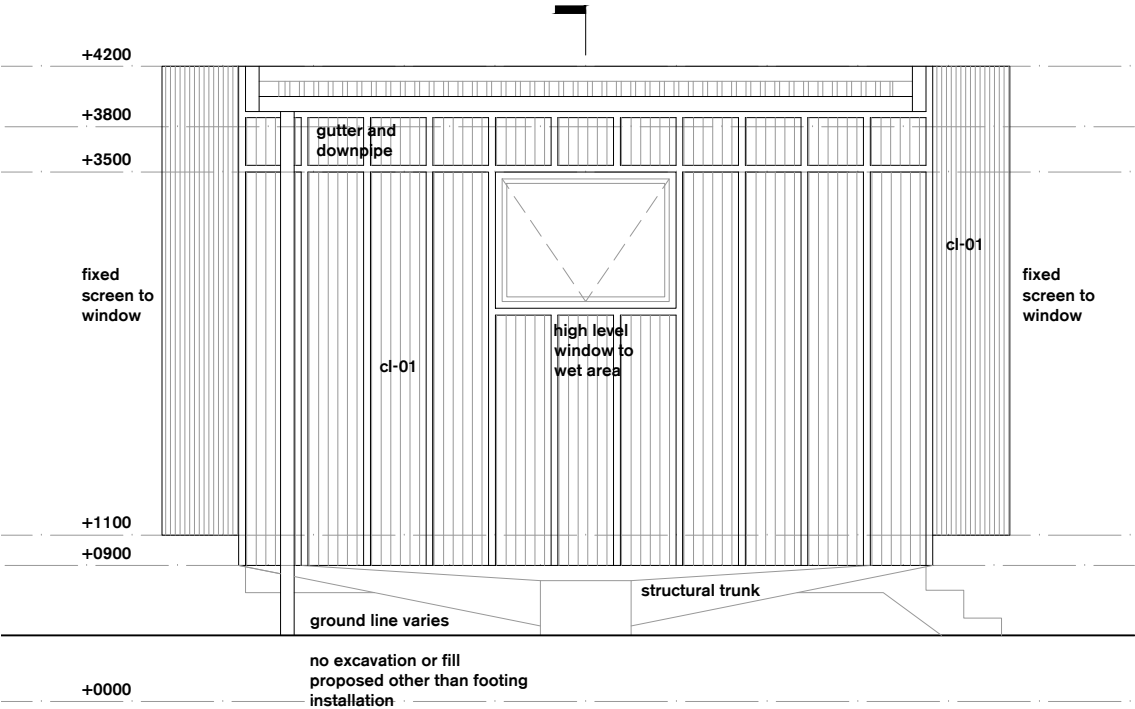
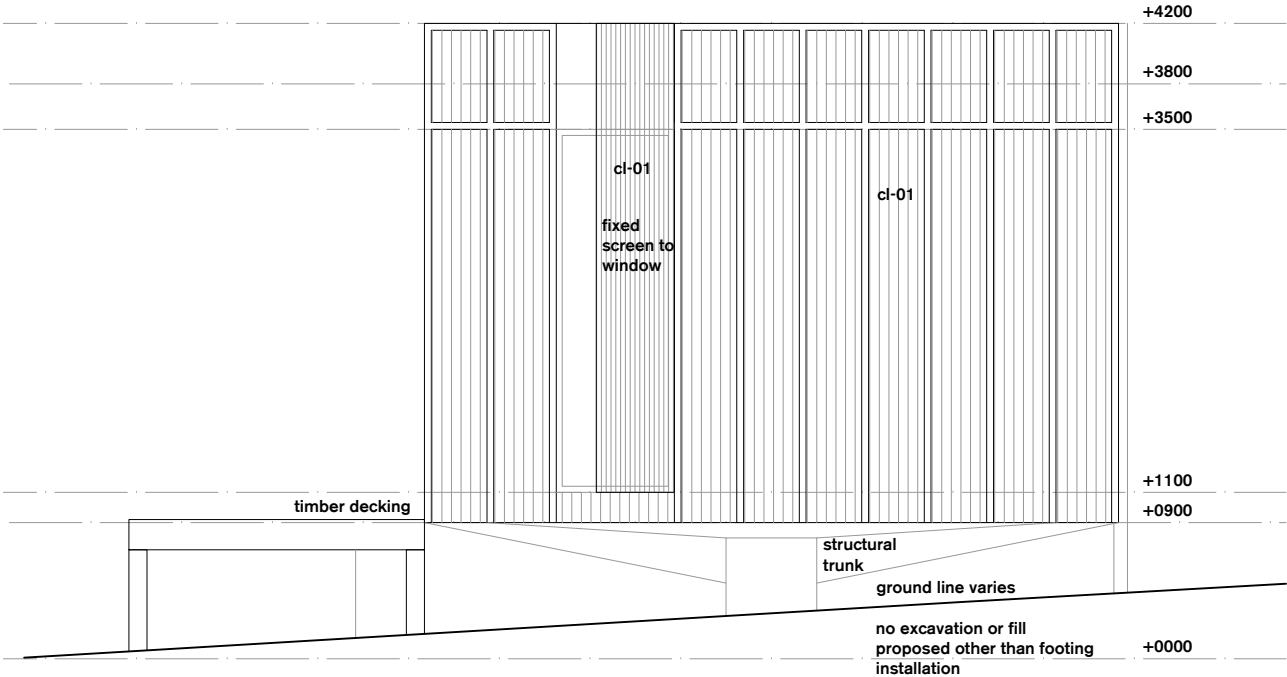
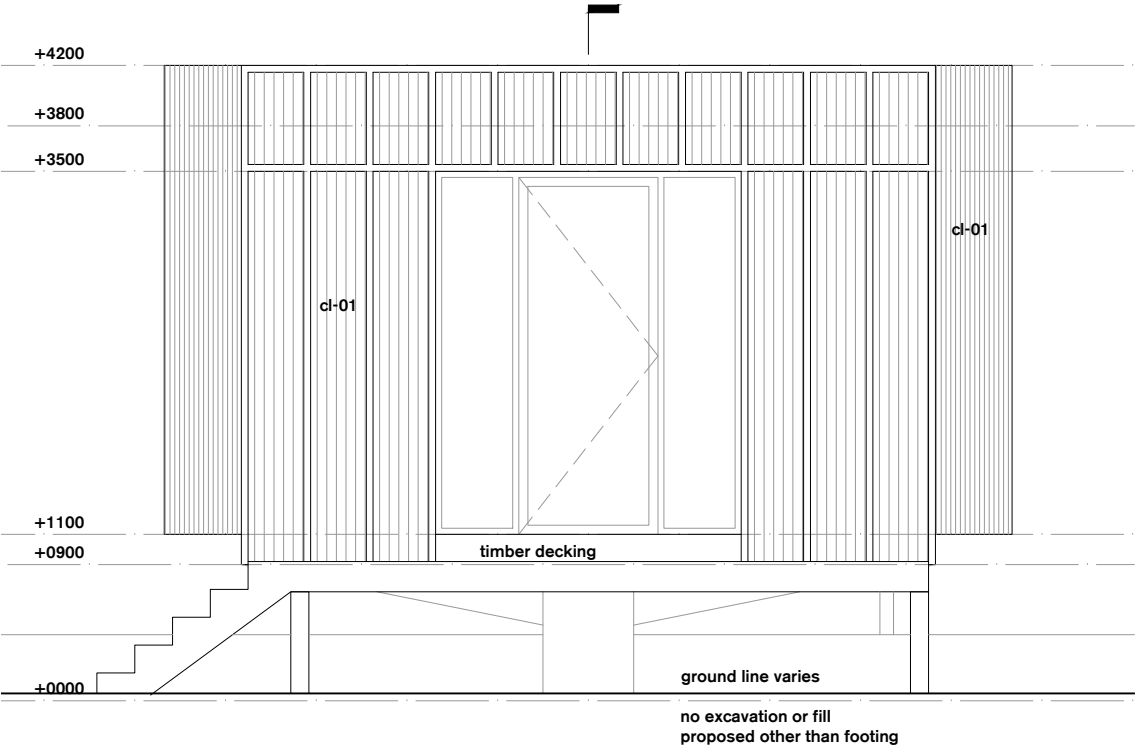


roof plan

cabins		
	cabin footprint (exc. decking)	20
total (x22)		440
materiality		
cl-01	cladding type 01	natural silvered timber
rs-01	roof sheeting type 01	aluminium corrugated permalite or equivalent colour colorbond basalt

notes  
cabins are shown in detail typically only with ground line to vary once sited accurately  
all areas given in sqm  
all areas are approximate only  
all cabins connected to approved septic and wastewater system on site  
all cabins connected to existing desalination plant  
all cabins connected to existing power supply on site

- t1 - type 1
- t1m - type 1 mirrored
- t2 - type 2



cabins		
	cabin footprint (exc. decking)	20
total (x22)		440
materiality		
cl-01	cladding type 01	natural silvered timber
rs-01	roof sheeting type 01	aluminium corrugated permalite or equivalent colour colorbond basalt

notes  
cabins are shown in detail typically only with ground line to vary once sited accurately  
all areas given in sqm  
all areas are approximate only  
all cabins connected to approved septic and wastewater system on site  
all cabins connected to existing desalination plant  
all cabins connected to existing power supply on site

t1 - type 1  
t1m - type 1 mirrored  
t2 - type 2

archaea

cabin t2

1:50 @ A3

These designs & drawings are copyright and the property of archaea architects pty ltd they shall not be used, reproduced or copied wholly or in part without the permission of archaea architects pty ltd. All dimensions shall be checked on site prior to construction or manufacture, any discrepancies shall be reports to archaea architects pty ltd immediately.

client

rumi on louth

project

cabins  
rumi resort

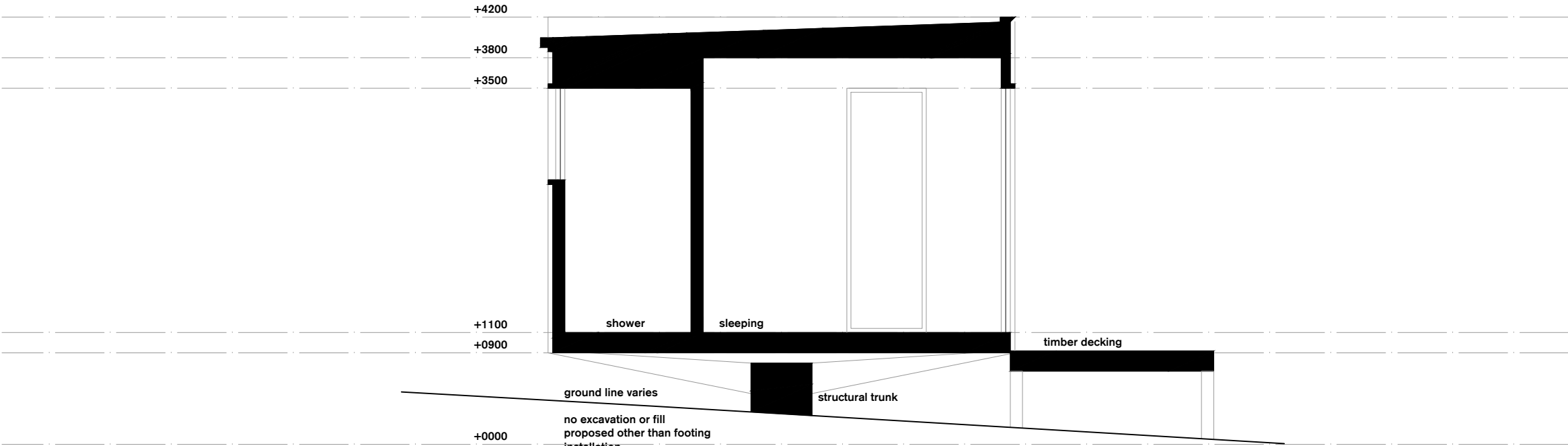
1.0 19.05.25 issued for review

rev date description

project no. dwg no. revision date

24-005 Pc05 1.0 may 2025

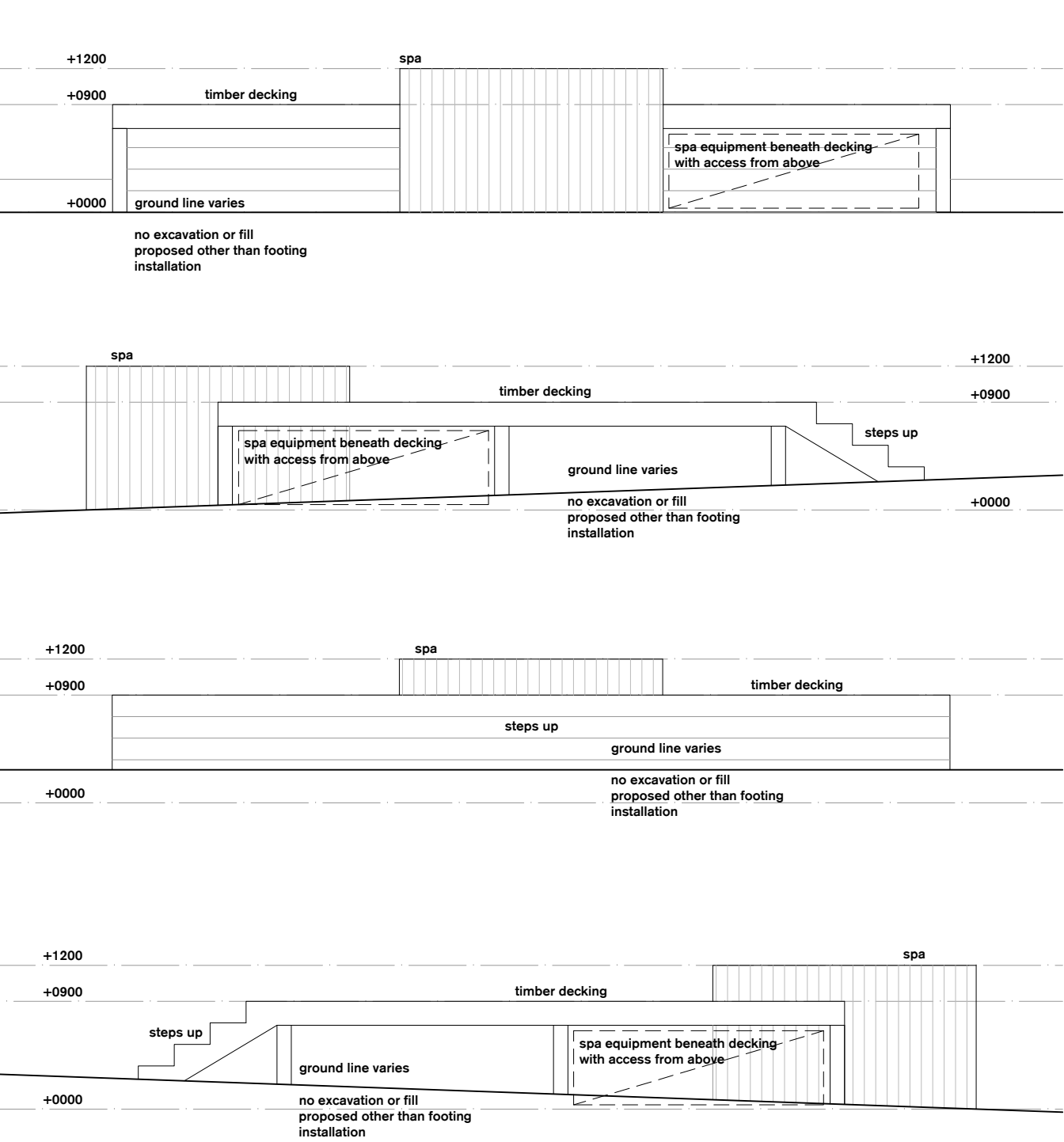
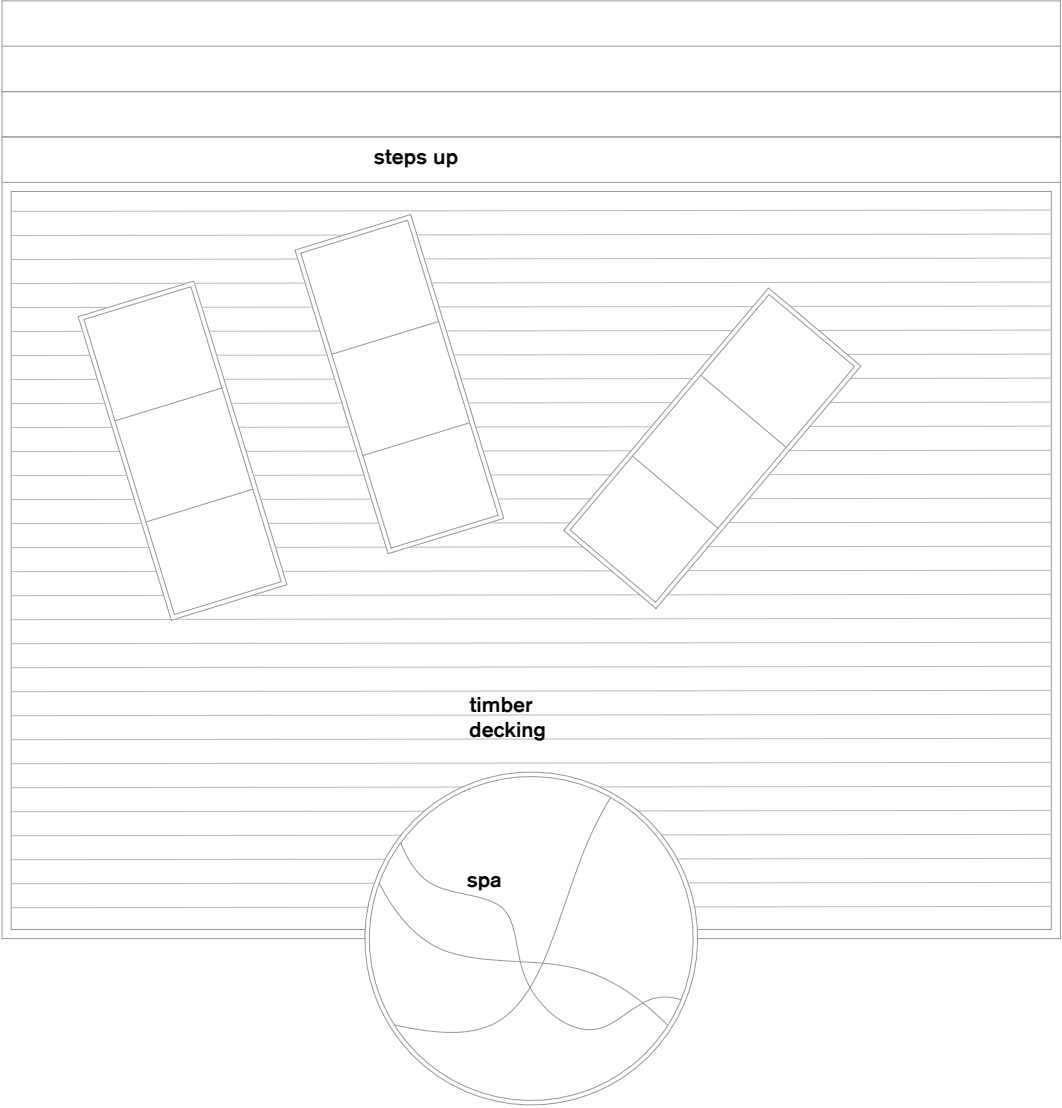
FOR APPROVAL ONLY  
NOT FOR CONSTRUCTION



cabins		
<div></div>	cabin footprint (exc. decking)	20
total (x22)		440
materiality		
cl-01	cladding type 01	natural silvered timber
rs-01	roof sheeting type 01	aluminium corrugated permalite or equivalent colour colorbond basalt

notes  
cabins are shown in detail typically only with ground line to vary once sited accurately  
all areas given in sqm  
all areas are approximate only  
all cabins connected to approved septic and wastewater system on site  
all cabins connected to existing desalination plant  
all cabins connected to existing power supply on site

t1 - type 1  
t1m - type 1 mirrored  
t2 - type 2



cabins		
<div></div>	cabin footprint (exc. decking)	20
total (x22)		440
materiality		
cl-01	cladding type 01	natural silvered timber
rs-01	roof sheeting type 01	aluminium corrugated permalite or equivalent colour colorbond basalt

notes  
cabins are shown in detail typically only with ground line to vary once sited accurately  
all areas given in sqm  
all areas are approximate only  
all cabins connected to approved septic and wastewater system on site  
all cabins connected to existing desalination plant  
all cabins connected to existing power supply on site

t1 - type 1  
t1m - type 1 mirrored  
t2 - type 2