

## APPENDIX M

### HERITAGE INFORMATION



## Heritage

46 Unley Road, Unley, SA 5061

### Commonwealth Heritage List

What are the Commonwealth Heritage List Items located within the dataset buffer?

Place Id	Name	Address	Place File No	Class	Status	Register Date	Distance	Direction
N/A	No records in buffer							

Heritage Data Source: Australian Government Department of the Environment and Energy - Heritage Branch  
Creative Commons 3.0 © Commonwealth of Australia <https://creativecommons.org/licenses/by/3.0/au/deed.en>

### National Heritage List

What are the National Heritage List Items located within the dataset buffer?

Note. Please click on Place Id to activate a hyperlink to online website.

Place Id	Name	Address	Place File No	Class	Status	Register Date	Distance	Direction
<a href="#">105758</a>	The Adelaide Park Lands and City Layout	South Tce, Adelaide SA	3/03/001/0279	Historic	Listed place	2008-11-07	296m	North
<a href="#">106159</a>	Adelaide Park Lands - Additional Area and Values	Fullerton Rd, Adelaide SA	3/03/001/0279	Historic	Nomination now ineligible for PPAL		297m	North

Heritage Data Source: Australian Government Department of the Environment and Energy - Heritage Branch  
Creative Commons 3.0 © Commonwealth of Australia <https://creativecommons.org/licenses/by/3.0/au/deed.en>

### State Heritage Areas

State Heritage Areas within the dataset buffer:

Heritage Id	Name	Distance	Direction
N/A	No records in buffer		

Heritage Areas Data Source: Dept of Environment, Water and Natural Resources - South Australia  
Creative Commons 3.0 © Commonwealth of Australia <http://creativecommons.org/licenses/by/3.0/au/deed.en>

### SA Heritage Places

SA Heritage Places within the dataset buffer:

Heritage No	Location	Heritage Class	Australian Class	Details	Auth Date	Distance	Direction
3775	34 Unley Road UNLEY	State	Business House - Offices	Office (former Dwelling built by WC Torode)		37m	North
24312	41-43 Unley Road PARKSIDE	Local	House	Corner Shop		44m	South East
3927	62 Unley Road UNLEY	Local	House	Shops	26/06/1997	51m	South
24301	14 Salisbury Street UNLEY	Local	House	Dwelling, fence and gate		124m	North West
3966	183-193 Young Street UNLEY	Local	House	Attached Dwellings	26/06/1997	126m	South
3806	9 Clyde Street PARKSIDE	Local	House	Dwelling	26/06/1997	163m	East
3805	5 Clyde Street PARKSIDE	Local	House	Dwelling (Zeehan)	26/06/1997	194m	East

Heritage No	Location	Heritage Class	Australian Class	Details	Auth Date	Distance	Direction
24313	67 Unley Road PARKSIDE	Local	Business: Commercial/Retail	Shop and former Dwelling		194m	South East
3859	135 Greenhill Road UNLEY	Local	Business House - Offices	Offices	26/06/1997	198m	North West
24314	69-71 Unley Road PARKSIDE	Local	Business: Commercial/Retail	Shop and former Dwelling		221m	South
25680	10 Palmerston Road UNLEY	Local		Dwelling		229m	West
3965	158 Young Street PARKSIDE	Local	House	Dwelling	26/06/1997	235m	East
25679	8 Palmerston Road UNLEY	Local		Dwelling		237m	West
25678	6 Palmerston Road UNLEY	Local		Dwelling		246m	North West
24289	154-156 Young Street PARKSIDE	Local	House	Semi-detached Dwellings		247m	East
24295	42-44 Porter Street PARKSIDE	Local	House	Dwellings (former Corner Shop and attached Dwelling)		252m	East
3964	152 Young Street 46 Porter Street PARKSIDE	Local	Religious Building	St Ann's Church (and Halls)	26/06/1997	257m	East
3866	2 Hughes Street UNLEY	Local	House	Dwelling (former Presbyterian Church)	26/06/1997	267m	South
25676	48 Porter Street PARKSIDE	Local		Dwelling		268m	East
3889	12 Montpelier Street PARKSIDE	Local	House	Dwelling	26/06/1997	348m	North East
3860	163A-164 Greenhill Road PARKSIDE	Local	Business House - Offices	Office (Meaghey House)	26/06/1997	352m	North East
3891	21 Montpelier Street PARKSIDE	Local	House	Dwelling	26/06/1997	379m	East
24150	17 Montpelier Street PARKSIDE	Local	House	Dwelling		384m	East
24144	33 Miller Street UNLEY	Local	House	Dwelling and fence		387m	West
3890	13 Montpelier Street PARKSIDE	Local	House	Dwelling and fence	26/06/1997	390m	East
26047	35 Hughes Street UNLEY	Local	House	Dwelling		393m	South West
24145	35 Miller Street UNLEY	Local	House	Dwelling and fence		395m	West
24146	37 Miller Street UNLEY	Local	House	Dwelling and fence		404m	West
27887	Lot 3 Culvert Street UNLEY	Contributory		Contributory Item	16/12/2020	408m	South East
24147	41 Miller Street UNLEY	Local	House	Dwelling and fence		417m	West
27884	84 - 86A Maud Street UNLEY	Contributory		Contributory Item	16/12/2020	439m	South East
27883	58 - 80 Maud Street UNLEY	Contributory		Contributory Item	16/12/2020	458m	South East
24315	105-109 Unley Road UNLEY	Local	Business: Commercial/Retail	Shops (and former attached dwelling)		475m	South
24316	111-113 Unley Road UNLEY	Local	Business: Commercial/Retail	Shops		478m	South
27891	72 - 78 Marion Street UNLEY	Contributory		Contributory Item	16/12/2020	486m	South
27895	92 Porter Street UNLEY	Contributory		Contributory Item	16/12/2020	488m	South East
24143	97 Maud Street (rear of 70 Marion Street) UNLEY	Local	Hall	Salvation Army Hall		489m	South

Heritage No	Location	Heritage Class	Australian Class	Details	Auth Date	Distance	Direction
3840	10-12 George Street PARKSIDE	Local	House	Attached Dwellings	26/06/1997	496m	East
24139	78 Marion Street UNLEY	Local	House	Dwelling		496m	South
27886	Lot 582 Maud Street UNLEY	Contributory		Contributory Item	16/12/2020	496m	South East
27896	87 Porter Street UNLEY	Contributory		Contributory Item	16/12/2020	504m	South East
3839	2-4 George Street PARKSIDE	Local	House	Attached Dwellings	26/06/1997	515m	East
27892	62 - 66 Marion Street UNLEY	Contributory		Contributory Item	16/12/2020	518m	South East
27885	75 Maud Street UNLEY	Contributory		contributory Item	16/12/2020	528m	South East
27893	4 - 58 Marion Street UNLEY	Contributory		Contributory Item	16/12/2020	541m	South East
3928	123 Unley Road UNLEY	Local	Business House - Offices	Bank (ANZ)	26/06/1997	543m	South
27889	77 - 91A Marion Street UNLEY	Contributory		Contributory Item	16/12/2020	548m	South
24317	129-133 Unley Road UNLEY	Local	Business: Commercial/Retail	Shops		561m	South
3963	107 Young Street PARKSIDE	Local	Business: Commercial/Retail	Shop and Attached Dwelling	26/06/1997	577m	East
24246	50 Hughes Street UNLEY	Local	House	Dwelling		578m	South West
3870	51 King William Road UNLEY	Local	Restaurant - Cabaret - Nightclub	Non-residential Club (former Dwelling - Mawson)	26/06/1997	581m	West
3772	179 Greenhill Road PARKSIDE	State	Business House - Offices	Carramar Clinic (former Dwelling St Margaret's)		584m	North East
27890	71 - 73 Marion Street UNLEY	Contributory		Contributory Item	16/12/2020	584m	South East
24318	137-141 Unley Road UNLEY	Local	Business: Commercial/Retail	Shops		590m	South
27894	2 - 14 Cambridge Terrace UNLEY	Contributory		Contributory Item	16/12/2020	591m	South East
27888	84 - 96 Frederick Street UNLEY	Contributory		Contributory Item	16/12/2020	596m	South
24288	101 Young Street PARKSIDE	Local	House	Dwelling		603m	East
27898	23 - 65 Marion Street UNLEY	Contributory		Contributory Item	16/12/2020	609m	South East
3857	89 Greenhill Road WAYVILLE	Local	Secondary School/College	Annesley College - Hall	26/06/1997	610m	West
3858	89 Greenhill Road WAYVILLE	Local	Secondary School/College	Annesley College - Main Building	26/06/1997	610m	West
3961	100 Young Street PARKSIDE	Local	Religious Building	Baptist Church	26/06/1997	611m	East
3962	100 Young Street PARKSIDE	Local	Religious Building	Baptist Church Hall	26/06/1997	611m	East
27882	36 - 40 Maud Street UNLEY	Contributory		Contributory Item	16/12/2020	611m	South East
24247	8 Jaffrey Street PARKSIDE	Local	House	Dwelling		614m	East
27897	54 - 80 Frederick Street UNLEY	Contributory		Contributory Item	16/12/2020	629m	South East
3884	74 Mary Street UNLEY	Local	House	Office (former Dwelling)	26/06/1997	632m	South West
27900	1 Cambridge Terrace UNLEY	Contributory		Contributory Item	16/12/2020	636m	South East
24266	57 Marion Street UNLEY	Local	House	Dwelling		639m	South East
24260	2 King William Road WAYVILLE	Local	Business: Commercial/Retail	Shop (former Shop and attached Dwelling)		643m	West
3868	12 King William Road WAYVILLE	Local	House	Dwelling	26/06/1997	649m	West

Heritage No	Location	Heritage Class	Australian Class	Details	Auth Date	Distance	Direction
24297	73 Robsart Street PARKSIDE	Local	House	Dwelling		653m	East
27899	5 - 15 Cambridge Terrace UNLEY	Contributory		Contributory Item	16/12/2020	655m	South East
24320	16-26 King William Road WAYVILLE	Local	Hostel - Guest house - Boarding House - Lodge	The Lodge Retirement Village (former Dwelling - White House)		656m	West
3871	67 King William Road UNLEY	Local	House	Office (former Dwelling)	26/06/1997	660m	South West
27901	88 - 92 George Street UNLEY	Contributory		Contributory Item	16/12/2020	662m	South East
27911	73 - 95 Frederick Street UNLEY	Contributory		Contributory Item	16/12/2020	668m	South
24253	69 King William Road UNLEY	Local	Business House - Offices	Office (former Dwelling)		679m	South West
24226	George Street PARKSIDE	Local	Bridge	Bridge Balustrades		683m	South East
24176	18 Bartley Crescent WAYVILLE	Local	Religious Building	Our Lady of Protection Ukrainian Catholic Church and fence		690m	West
25186	28-30 King William Road WAYVILLE	Local		Dwelling (former Manse)		693m	South West
3929	165 Unley Road UNLEY	Local	Business House - Offices	Bank (former Savings Bank)	26/06/1997	694m	South
27903	57 George Street UNLEY	Contributory		Contributory Item	16/12/2020	701m	South East
3885	75 Mary Street UNLEY	Local	House	Dwelling	26/06/1997	707m	South West
3933	190 Unley Road UNLEY	Local	Business: Commercial/Retail	Shop	26/06/1997	709m	South
3790	22-24 Arthur Street UNLEY	Local	Civic/Community Centre	Masonic Hall	26/06/1997	710m	South
3914	Rugby Street (behind 81 Frederick Street) UNLEY	Local	Religious Building	Congregational Church	26/06/1997	710m	South
27925	Lot 24 Rugby Street UNLEY	Contributory		Contributory Item	16/12/2020	710m	South
27926	2 - 8 Trimmer Terrace UNLEY	Contributory		Contributory Item	16/12/2020	716m	South East
27902	Lot 143 George Street UNLEY	Contributory		Contributory Item	16/12/2020	719m	South East
24162	50 Oxford Terrace UNLEY	Local	Religious Building	Church of St Spyridon and fence		720m	South
27924	1 Rugby Street UNLEY	Contributory		Contributory Item	16/12/2020	722m	South East
24309	2 Trevelyan Street WAYVILLE	Local	House	Dwelling		730m	West
27879	18 - 30 Maud Street UNLEY	Contributory		Contributory Item	16/12/2020	737m	South East
27881	Lot 144 Maud Street UNLEY	Contributory		Contributory Item	16/12/2020	740m	South East
4181	33 - 35 Stamford Street PARKSIDE	Contributory	Historic Sites (unclassified)		26/06/1997	741m	East
20909	29 Stamford Street PARKSIDE	Contributory	House		26/06/1997	741m	East
27916	30 - 44 Oxford Street UNLEY	Contributory		Contributory Item	16/12/2020	741m	South East
4229	59 - 91 Alfred Street PARKSIDE	Contributory	Historic Sites (unclassified)		26/06/1997	742m	East
3878	85 Leicester Street PARKSIDE	Local	Hotel - Motel - Inn	Hotel (Earl of Leicester)	26/06/1997	744m	South East
4290	78 - 86 Young Street PARKSIDE	Contributory	Historic Sites (unclassified)		26/06/1997	744m	East

Heritage No	Location	Heritage Class	Australian Class	Details	Auth Date	Distance	Direction
3798	20 Bartley Crescent WAYVILLE	Local	House	Dwelling (former Institute)	26/06/1997	745m	West
3968	Trimmer Terrace UNLEY	Local	Sporting Facility - General	Unley Oval (McKay Grandstand, Sturt Lawn Tennis Club and entrance gate, and Sturt Bowling Club and entrance gate)	26/06/1997	745m	South East
28087	Lot 586 Trimmer Terrace UNLEY	Contributory		Contributory Item	16/12/2020	745m	South East
4185	17 - 31 Oxenbould Street PARKSIDE	Contributory	Historic Sites (unclassified)		26/06/1997	746m	East
27910	50 Frederick Street UNLEY	Contributory		Contributory Item	16/12/2020	755m	South East
4205	24 - 32 Oxenbould Street PARKSIDE	Contributory	Historic Sites (unclassified)		26/06/1997	760m	East
4247	28 - 90 Alfred Street PARKSIDE	Contributory	Historic Sites (unclassified)		26/06/1997	767m	East
24310	5 Trevelyan Street WAYVILLE	Local	House	Dwelling		768m	South West
3791	29 Arthur Street UNLEY	Local	Religious Building	RSL Hall (former Methodist Church)	26/06/1997	776m	South
3792	29 Arthur Street UNLEY	Local	House	RSL Office (former Church Hall)	26/06/1997	776m	South
4215	42 - 48 St Anns Place PARKSIDE	Contributory	Historic Sites (unclassified)		26/06/1997	778m	East
3904	Oxford Terrace (part of 181 Unley Road) UNLEY	Local	Council Offices	Unley Town Hall	26/06/1997	783m	South
3905	Oxford Terrace (part of 181 Unley Road) UNLEY	Local	Historic Sites (unclassified)	Bomb Shelter	26/06/1997	783m	South
3930	181 Unley Road UNLEY	Local	Library	Library (former Unley Council Chambers)	26/06/1997	783m	South
3931	181 Unley Road UNLEY	Local	Monument - Column - Cairn - Cross - Shrine - Marker - Statue	Drinking Fountain	26/06/1997	783m	South
27909	30 - 44 Frederick Street UNLEY	Contributory		Contributory Item	16/12/2020	784m	South East
4209	41 - 47 St Anns Place PARKSIDE	Contributory	Historic Sites (unclassified)		26/06/1997	806m	East
4184	13 Oxenbould Street PARKSIDE	Contributory	Historic Sites (unclassified)		26/06/1997	809m	East
4289	12 - 70 Young Street PARKSIDE	Contributory	Historic Sites (unclassified)		26/06/1997	811m	East
27923	41 - 43 Oxford Terrace UNLEY	Contributory		Contributory Item	16/12/2020	812m	South East
21933	3 and 3D Chinner Avenue PARKSIDE	Contributory			26/06/1997	813m	East
4198	18 - 20 Oxenbould Street PARKSIDE	Contributory	Historic Sites (unclassified)		26/06/1997	814m	East
27878	2 - 14 Maud Street UNLEY	Contributory		Contributory Item	16/12/2020	815m	South East
1608	South Terrace South Park Lands ADELAIDE	Local	Historic Sites (unclassified)	Glover Playground Pavilion	1/11/2001	817m	North
3776	183 Unley Road UNLEY	State	Religious Building	St Augustine's Anglican Churches (Old and New)		820m	South
3912	19 Rose Terrace WAYVILLE	Local	Religious Building	Church (former Baptist Church)	26/06/1997	820m	West
4196	12 - 14 Oxenbould Street PARKSIDE	Contributory	Historic Sites (unclassified)		26/06/1997	834m	East

Heritage No	Location	Heritage Class	Australian Class	Details	Auth Date	Distance	Direction
27917	1 Langham Terrace UNLEY	Contributory		Contributory Item	16/12/2020	834m	South East
3780	61 Young Street PARKSIDE	State	House	House - Former Private School of J.L. Young		835m	East
4251	37 - 61 Young Street PARKSIDE	Contributory	Historic Sites (unclassified)		26/06/1997	835m	East
27927	16 - 24 Trimmer Terrace UNLEY	Contributory		Contributory Item	16/12/2020	843m	South East
3820	80-82 Edmund Avenue UNLEY	Local	Museum	Unley Museum (former Unley Fire Station)	26/06/1997	846m	South
3817	8-14 Duthy Street (cnr Frederick Street) UNLEY	Local	Business: Commercial/Retail	Shops	26/06/1997	848m	South East
27912	4 - 14 Duthy Street UNLEY	Contributory		Contributory Item	16/12/2020	848m	South East
27880	15 Maud Street UNLEY	Contributory		Contributory Item	16/12/2020	849m	South East
3921	35-39 St. Ann's Place PARKSIDE	Local	House	Attached Dwellings	26/06/1997	853m	East
4206	5 - 39 St Anns Place PARKSIDE	Contributory	Historic Sites (unclassified)		26/06/1997	853m	East
3924	10 Thomas Street UNLEY	Local	Flat - Units	Flats (former Dwelling - Mornington)	26/06/1997	857m	South
4195	8 Oxenbould Street PARKSIDE	Contributory	Historic Sites (unclassified)		26/06/1997	861m	East
27930	66 - 70 Edmund Avenue UNLEY	Contributory		Contributory Item	16/12/2020	865m	South
27908	18 - 26 Frederick Street UNLEY	Contributory		Contributory Item	16/12/2020	876m	South East
27905	11 - 19 Marion Street UNLEY	Contributory		Contributory Item	16/12/2020	878m	South East
4193	2 - 4 Oxenbould Street PARKSIDE	Contributory	Historic Sites (unclassified)		26/06/1997	881m	East
27918	9 - 21 Langham Terrace UNLEY	Contributory		Contributory Item	16/12/2020	885m	South East
28103	9 Chinner Avenue PARKSIDE	Contributory		Contributory Item	16/12/2020	891m	East
24166	6 Albert Street GOODWOOD	Local	House	Dwelling		898m	South West
4212	14-16 St Anns Place PARKSIDE	Contributory	Historic Sites (unclassified)		26/06/1997	901m	East
3935	226 Unley Road UNLEY	Local	Monument - Column - Cairn - Cross - Shrine - Marker - Statue	War Memorial Gardens and Arch	26/06/1997	903m	South
1676	239 South Terrace ADELAIDE	State	Hotel - Motel - Inn	Adelaide City Park Motel (former Green Dragon Hotel)		905m	North
24251	64-64A King William Road GOODWOOD	Local	Business: Commercial/Retail	Shop and attached former Dwelling		908m	South West
3932	187 Unley Road UNLEY	Local	Religious Building	Uniting Church and Hall	26/06/1997	912m	South
951	253 South Terrace ADELAIDE	Local	House	Former House	1/11/2001	913m	North
27933	59 - 85 Edmund Avenue UNLEY	Contributory		Contributory Item	16/12/2020	915m	South
952	257-260 South Terrace ADELAIDE	Local	House	Terrace House	1/11/2001	916m	North
1118	205 South Terrace ADELAIDE	Local	Secondary School/College	Former House (part Pulteney Grammar School)	1/11/2001	917m	North
3922	19 Simpson Parade GOODWOOD	Local	House	Dwelling	26/06/1997	917m	South West



Heritage No	Location	Heritage Class	Australian Class	Details	Auth Date	Distance	Direction
3821	79-85 Edmund Avenue (81) UNLEY	Local	Police Station	Office (former Police Station)	26/06/1997	918m	South
3822	79-85 Edmund Avenue (83) UNLEY	Local	Law Courts	Office (former Court House)	26/06/1997	920m	South
1496	261-265 South Terrace ADELAIDE	State	Business House - Offices	Former Royal South Australian Deaf Society Headquarters		922m	North
1599	65-69 Gilles Street ADELAIDE	Local	Secondary School/College	Former Hotel (part Pulteney Grammar)	1/11/2001	922m	North
25074	193-199 South Terrace ADELAIDE	Local		School (Nicholls Building)	24/02/2011	922m	North
27915	26 Oxford Street UNLEY	Contributory		Contributory Item	16/12/2020	923m	South East
3783	40-54 Alfred Street PARKSIDE	Local	House	Attached Dwellings	26/06/1997	927m	East
24323	1/ 21 St. Anns Place PARKSIDE	Local	House	Dwelling		927m	East
25189	2/ 19 St. Anns Place PARKSIDE	Local		Dwelling		927m	East
4221	35 - 49 Alfred Street PARKSIDE	Contributory	Historic Sites (unclassified)		26/06/1997	928m	East
24285	Windsor Street (Henry Codd Reserve) PARKSIDE	Local	Bridge	Bridge Balustrades		928m	South East
3886	6 McGowan Avenue UNLEY	Local	House	Dwelling (Fairford House - former School)	26/06/1997	929m	South West
3923	21 Simpson Parade GOODWOOD	Local	House	Dwelling and fence	26/06/1997	930m	South West
27904	1 - 7 Marion Street UNLEY	Contributory		Contributory Item	16/12/2020	930m	South East
24270	189 Unley Road UNLEY	Local	Business House - Offices	Office (former Dwelling and attached Shop)		931m	South
27906	1 - 19 Frederick Street UNLEY	Contributory		Contributory Item	16/12/2020	932m	South East
27907	2 - 14 Frederick Street UNLEY	Contributory		Contributory Item	16/12/2020	932m	South East
24322	1/ 17 St. Anns Place PARKSIDE	Local	House	Dwelling		941m	East
25188	2/ 15 St. Anns Place PARKSIDE	Local		Dwelling		941m	East
24257	113-119 King William Road UNLEY	Local	Business: Commercial/Retail	Shops		956m	South West
24321	13 St. Anns Place PARKSIDE	Local		Dwelling		957m	East
26488	284-286 South Terrace ADELAIDE	State	House	Magarey House		960m	North
25187	11 St. Anns Place PARKSIDE	Local		Dwelling		964m	East
27922	29 Oxford Terrace UNLEY	Contributory		Contributory Item	16/12/2020	964m	South East
27947	58 - 80 Fairford Street UNLEY	Contributory		Contributory Item	16/12/2020	964m	South
27914	16 - 22 Oxford Street UNLEY	Contributory		Contributory Item	16/12/2020	966m	South East
27932	45 - 55 Edmund Avenue UNLEY	Contributory		Contributory Item	16/12/2020	968m	South East
3936	232 Unley Road UNLEY	Local	Business House - Offices	Office (former National Bank)	26/06/1997	971m	South
24245	Hill Street (cnr Windsor Street) PARKSIDE	Local	Bridge	Bridge Balustrades		971m	South East

Heritage No	Location	Heritage Class	Australian Class	Details	Auth Date	Distance	Direction
1506	111 Gilles Street ADELAIDE	State	Primary School	Gilles Street Primary School (1899 building only)		972m	North
1117	174 South Terrace ADELAIDE	Local	House	House	1/11/2001	973m	North West
24296	31 Robsart Street PARKSIDE	Local	House	Dwelling		979m	East
25056	24-26 Delhi Street ADELAIDE	Local		Dwellings	24/02/2011	980m	North
25057	28-30 Delhi Street ADELAIDE	Local		Dwellings	24/02/2011	980m	North
25058	36-40 Delhi Street ADELAIDE	Local		Dwellings	24/02/2011	981m	North
27921	17 - 25 Oxford Terrace UNLEY	Contributory		Contributory Item	16/12/2020	981m	South East

Heritage Places Data Source: Dept of Environment, Water and Natural Resources - South Australia  
Creative Commons 3.0 © Commonwealth of Australia <http://creativecommons.org/licenses/by/3.0/au/deed.en>

## Aboriginal Land

Aboriginal Land within the dataset buffer:

Map Id	Grant Date	Address	Locality	Description	Title	Distance	Direction
N/A	No records in buffer						

Aboriginal Land Data Source: Department of State Development, Resources and Energy - South Australia

## APPENDIX N

# DEFENCE AND PFAS INVESTIGATION SITES

## PFAS Investigation & Management Programs

46 Unley Road, Unley, SA 5061

### Defence PFAS Investigation & Management Program Investigation Sites

Sites being investigated by the Department of Defence for PFAS contamination within the dataset buffer:

Map ID	Base Name	Address	Location Confidence	Distance	Direction
N/A	No records in buffer				

Defence PFAS Investigation & Management Program Data Custodian: Department of Defence, Australian Government

### Defence PFAS Investigation & Management Program Management Sites

Sites being managed by the Department of Defence for PFAS contamination within the dataset buffer:

Map ID	Base Name	Address	Location Confidence	Distance	Direction
N/A	No records in buffer				

Defence PFAS Investigation & Management Program Data Custodian: Department of Defence, Australian Government

### Airservices Australia National PFAS Management Program

Sites being investigated or managed by Airservices Australia for PFAS contamination within the dataset buffer:

Map ID	Site Name	Impacts	Location Confidence	Distance	Direction
N/A	No records in buffer				

Airservices Australia National PFAS Management Program Data Custodian: Airservices Australia

## Defence Sites

46 Unley Road, Unley, SA 5061

### Defence 3 Year Regional Contamination Investigation Program

Sites which have been assessed as part of the Defence 3 Year Regional Contamination Investigation Program within the dataset buffer:

Property ID	Base Name	Address	Known Contamination	Loc Conf	Dist	Dir
N/A	No records in buffer					

Defence 3 Year Regional Contamination Investigation Program, Data Custodian: Department of Defence, Australian Government

## APPENDIX O

### NATURAL HAZARDS

## Natural Hazards

46 Unley Road, Unley, SA 5061

## Bushfire Overlays

Bushfire Overlays from the Planning and Design Code within the dataset buffer:

Overlay Id	Name	Description	Legal Start Date	Legal End Date	Distance	Direction
N/A	No records in buffer					

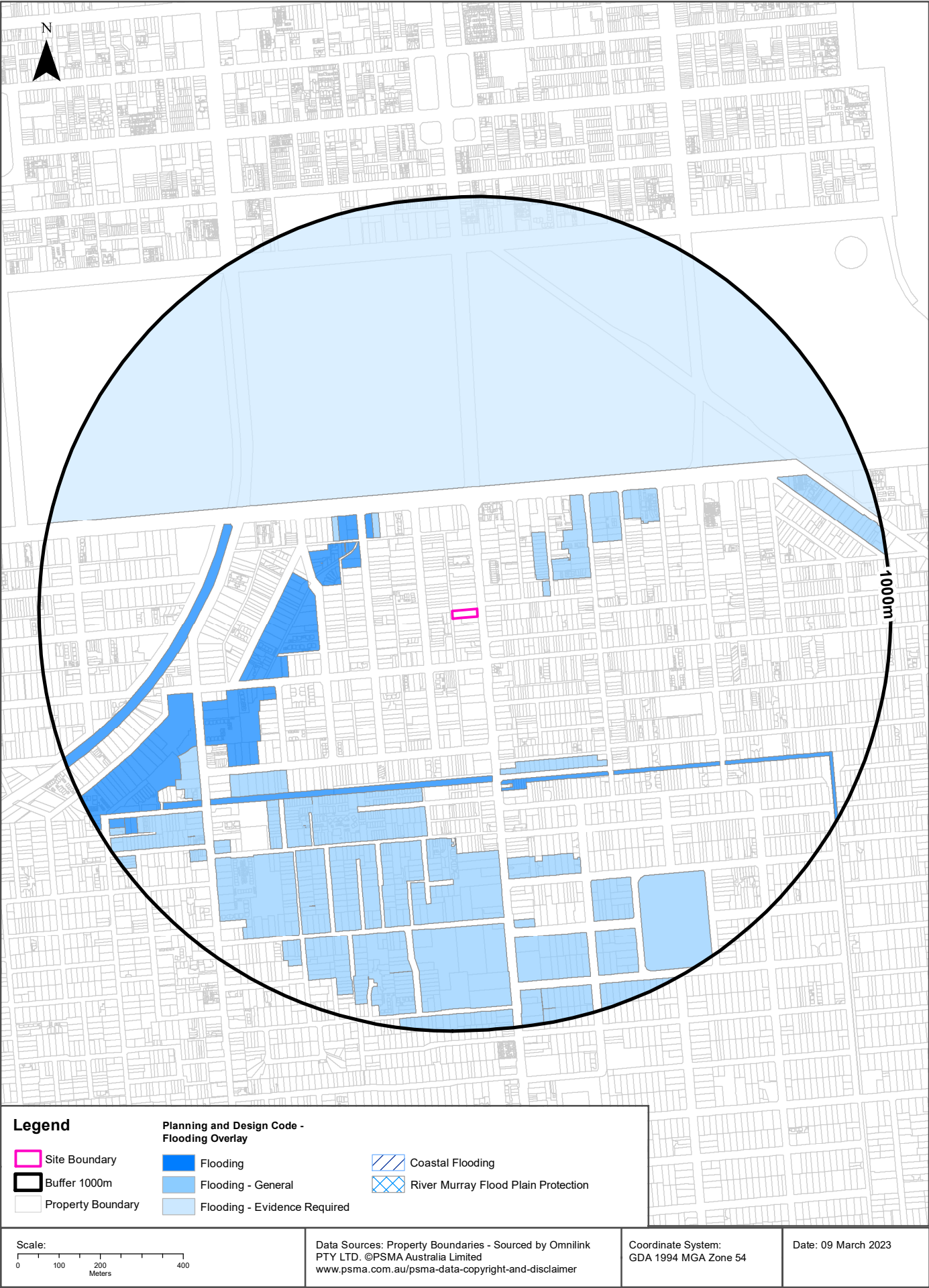
Bushfire Overlays Data Source: Attorney-General's Department - South Australia  
Creative Commons 4.0 © Commonwealth of Australia <http://creativecommons.org/licenses/by/4.0/au/deed.en>

## Bushfires and Prescribed Burns History

Bushfires and prescribed burns within the dataset buffer:

Map Id	Incident No.	Incident Name	Incident Type	Date of Fire	Area of Fire (ha)	Distance	Direction
N/A	No records in buffer						

Bushfires and Prescribed Burns History Data Source: Dept of Environment, Water and Natural Resources - South Australia  
Creative Commons 3.0 © Commonwealth of Australia <http://creativecommons.org/licenses/by/3.0/au/deed.en>





## Natural Hazards

46 Unley Road, Unley, SA 5061

### Flooding Overlays

Flooding Overlays from the Planning and Design Code within the dataset buffer:

Overlay Id	Name	Description	Legal Start	Legal End	Distance	Direction
O2414	Hazards (Flooding - General)	The Hazards (Flooding - General) Overlay seeks to minimise impacts of general flood risk through appropriate siting and design of development.	10/11/2022		159m	North East
O2403	Hazards (Flooding)	The Hazards (Flooding) Overlay seeks to minimise flood hazard risk to people, property, infrastructure and the environment.	10/11/2022		246m	North West
O2416	Hazards (Flooding - Evidence Required)	The Hazards (Flooding - Evidence Required) Overlay adopts a precautionary approach to mitigate potential impacts of potential flood risk through appropriate siting and design of development.	10/11/2022		296m	North

Flooding Overlays Data Source: Attorney-General's Department - South Australia

Creative Commons 4.0 © Commonwealth of Australia <http://creativecommons.org/licenses/by/4.0/au/deed.en>

## APPENDIX P

# ECOLOGICAL CONSTRAINTS

## Ecological Constraints

46 Unley Road, Unley, SA 5061

### Groundwater Dependent Ecosystems Atlas

Type	Name	GDE Potential	Geomorphology	Ecosystem Type	Aquifer Geology	Distance	Direction
N/A	No records in buffer						

Groundwater Dependent Ecosystems Atlas Data Source: The Bureau of Meteorology  
Creative Commons 3.0 © Commonwealth of Australia <http://creativecommons.org/licenses/by/3.0/au/deed.en>

## Ecological Constraints

46 Unley Road, Unley, SA 5061

### Inflow Dependent Ecosystems Likelihood

Type	Name	IDE Likelihood	Geomorphology	Ecosystem Type	Aquifer Geology	Distance	Direction
N/A	No records in buffer						

Inflow Dependent Ecosystems Likelihood Data Source: The Bureau of Meteorology  
Creative Commons 3.0 © Commonwealth of Australia <http://creativecommons.org/licenses/by/3.0/au/deed.en>

## Ecological Constraints

46 Unley Road, Unley, SA 5061

### Ramsar Wetlands

What Ramsar wetland areas exist within the dataset buffer?

Wetland	Distance	Direction
No records in buffer		

Ramsar Wetlands Data Source: Dept of Environment, Water and Natural Resources - South Australia  
Creative Commons 3.0 © Commonwealth of Australia <http://creativecommons.org/licenses/by/3.0/au/deed.en>

## APPENDIX Q

### PRACTICE DIRECTION 14 SCHEDULE 2

# PRACTICE DIRECTION 14

## Site Contamination Assessment 2021



This practice direction is issued by the State Planning Commission under sections 42 and 127 of the *Planning, Development and Infrastructure Act 2016*.

### Schedule 2 — Site contamination declaration form

Site contamination declaration form	
Council area: <i>City of Unley</i>	
Regarding the land comprised in Certificate of Title Register Book Volume 5564 Folio 801 (the <b>subject land</b> – as further detailed in the following table)	
Site Location	42-46 Unley Road, Unley, SA 5061
Certificate of Title (CT)	Volume 5564 Folio 801
Property Description	Allotment 138 Filed Plan 13556 In The Area Named Unley Hundred Of Adelaide
Area of Site	Approximately 1,100 m <sup>2</sup> (0.11 ha)
Local Government Authority	City of Unley
Zoning	Urban Corridor (Main Street)
Current Site Usage	Commercial (non-sensitive)
Ownership	Otello Unley Pty Ltd
Proposed Land Use	Mixed commercial (non-sensitive) and residential (sensitive)
I <i>Dr Ruth Keogh of Land &amp; Water Consulting</i> , a site contamination consultant, certify the following details:	
<b>Part 1—Investigations</b>	
(a) I have relied on the following report to complete this statement: <i>Preliminary Site Investigation: 42-46 Unley Road, Unley, South Australia</i> , LWC MM-02 PSI FR001 dated 21 April 2023.	
(b) Investigations were conducted in accordance with the <i>National Environment Protection (Assessment of Site Contamination) Measure 1999</i> (ASC NEPM).	

**Part 2—Site contamination unlikely to exist (for the purposes of planning consent)\***

- (a) ~~A potentially contaminating activity (as defined in the *State Planning Commission Practice Direction 14 (Site Contamination Assessment)*) is not known to have occurred on the subject land;~~
- (b) ~~A class 1 activity (see the *State Planning Commission Practice Direction 14 (Site Contamination Assessment)*) is not known to have occurred on adjacent land.~~

**Part 3—Site contamination exists or may exist\***

- (a) site contamination exists or may exist on or below the surface of the land as a result of a class 1 activity (including where a class 1 activity exists or previously existed on adjacent land) and class 2 activity, class 3 activity (see the *State Planning Commission Practice Direction 14 (Site Contamination Assessment)*), or notification of site contamination of underground water (as shown on the South Australian Property and Planning Atlas) including where such a notification exists on adjacent land;
- (b) the site contamination originated or is likely to have originated—
  - (i) ~~on the subject land\*~~
    - (A) ~~as a result of the following historical activities carried on there:~~
    - (B) ~~at the following location:~~
  - (ii) on adjacent land (i.e. class 1 activity or notification of site contamination of underground water (as shown on the South Australian Property and Planning Atlas))\*—
    - (A) as a result of the following activities carried on there
      - **several dry cleaning facilities;**
      - **a metal coating, finishing or spray painting business;**
      - **a service station;**
      - **a tyre retreading and/or vulcanising business; and**
      - **a printing works.**

(B) at the following location

**Refer to PSI report for specific locations (all within 60 m of Site)**

and

~~the subject site is impacted by a notification of site contamination of underground water originating from adjacent land. *[insert or attach details of relevant investigations]*.~~



**Part 4—Observations\***

The subject land is located on land within a ~~[select any that apply]—~~

- ☐ ~~Groundwater prohibition area (as shown on the South Australian Property~~  
~~and Planning Atlas) subject of a notation under section 103P of the~~  
~~Environment Protection Act 1993 on the relevant title~~  
~~that a site contamination audit report has been prepared in respect of the land.~~

**Date**

21 April 2023

**Signature of site contamination consultant**



**Dr Ruth Keogh | Senior Principal Environmental Scientist**



Land & Water Consulting  
Suite 3, 4-8 Goodwood Road, WAYVILLE, SA 5034  
P: +61 8 8271 5255|M: +61 439 338 127  
E: [rkeogh@lwconsulting.com.au](mailto:rkeogh@lwconsulting.com.au) | [www.lwconsulting.com.au](http://www.lwconsulting.com.au)

**Note 1**—Investigations found the existence of ‘fill or soil importation’ on-site (i.e. importation, to a premises of a business, of soil or other fill originating from a site at which another potentially contaminating activity has taken place pursuant Schedule 3 of the *Environment Protection Regulations 2009*). Fill or soil importation is not a potentially contaminating activity for the purposes of the *State Planning Commission Practice Direction: (Site Contamination Assessment)*, but remains a potentially contaminating activity under the *Environment Protection Regulations 2009*. The EPA’s Industry Guideline on ‘*Construction environmental management plans (CEMP)*’ provides assistance on meeting the obligations of the *Environment Protection Act 1993*. \*

**Note 2**—It is an offence to provide false or misleading information on this Form. Maximum penalty: \$20 000 pursuant to section 217 of the *Planning, Development and Infrastructure Act 2016*.

**Note 3**—The “subject land” is the land the subject of the development application.

**Note 4**—“Adjacent land” is defined in section 3(1) of the *Planning, Development and Infrastructure Act 2016* to mean “in relation to other land, means land that is no more than 60 metres from other land”.

## APPENDIX R

# STATEMENT OF LIMITATIONS

---

## STATEMENT OF LIMITATIONS & IMPORTANT INFORMATION REGARDING YOUR REPORT

### INTRODUCTION

This report has been prepared by Land & Water Consulting for you, as Land & Water Consulting's client, in accordance with our agreed purpose, scope, schedule and budget.

The report has been prepared using accepted procedures and practices of the consulting profession at the time it was prepared, and the opinions, recommendations and conclusions set out in the report are made in accordance with generally accepted principles and practices of that profession.

The report is based on information gained from environmental conditions (including assessment of some or all of soil, groundwater, vapour and surface water) and supplemented by reported data of the local area and professional experience. Assessment has been scoped with consideration to industry standards, regulations, guidelines and your specific requirements, including budget and timing. The characterisation of site conditions is an interpretation of information collected during assessment, in accordance with industry practice.

This interpretation is not a complete description of all material on or in the vicinity of the site, due to the inherent variation in spatial and temporal patterns of contaminant presence and impact in the natural environment. Land & Water Consulting may have also relied on data and other information provided by you and other qualified individuals in preparing this report. Land & Water Consulting has not verified the accuracy or completeness of such data or information except as otherwise stated in the report. For these reasons the report must be regarded as interpretative, in accordance with industry standards and practice, rather than being a definitive record.

No warranty or guarantee of the site conditions is intended.

This report was prepared for the sole use of you, the Client and may not contain sufficient information for purposes of other parties or for other uses. Any reliance on this report by third parties shall be at such parties sole risk. This report shall only be presented in full and may not be used to support any other objectives than those set out in the report, except where written approval with comments are provided by Land & Water Consulting.

The report does not include the evaluation or assessment of potential geotechnical engineering constraints of the site.

### LIMITATIONS OF THE REPORT

The scope of works undertaken and the report prepared to complete the assessment was in accordance with the information provided by the client and the specifications for works required under the contract. As such, works undertaken and statements made are based on those specifications (such as levels of risks and significance of any contamination) and should be considered and interpreted within this context. The analyses, evaluations, opinions and conclusions presented in this report are based on that purpose and scope, requirements, data or information, and they could change if such requirements or data are inaccurate or incomplete.

Your environmental report should not be used without reference to Land & Water Consulting in the first instance:

- When the nature of the proposed development is changed, for example if a residential development is proposed instead of a commercial one;
- When the size or configuration of the proposed development is altered;
- When the location or orientation of the proposed structures are modified;
- When there is a change in ownership;
- For application to an adjacent site.

In addition, advancements in professional practice regarding contaminated land and changes in applicable statutes and/or guidelines may affect the validity of this report. Consequently, the currency of conclusions and recommendations in this report should be verified if you propose to use this report more than 6 months after its date of issue.

#### **ENVIRONMENTAL ASSESSMENT “FINDINGS” ARE PROFESSIONAL ESTIMATES**

The information in this report is considered to be accurate with respect to conditions encountered at the site at the time of investigation and considering the inherent limitations associated with extrapolating information from a sample set. Note however that site assessment identifies actual subsurface conditions only at those specific points where samples are taken, when they are taken. Environmental data derived through sampling and analysis are interpreted by consultants who then render an opinion about overall subsurface conditions, the nature and extent of contamination and potential impacts on the use of the land. Actual conditions may differ from those inferred to exist as no professional and no subsurface assessment program can reveal every detail within the ground across a site. Subsurface conditions can vary across a particular site and no practical degree of sampling can ever eliminate the possibility that conditions may be present at a site that have not been represented through sampling.

#### **SUBSURFACE CONDITIONS CAN CHANGE**

This report is valid as of the date of preparation. The condition of the site (including subsurface conditions) and extent or nature of contamination or other environmental hazards can change over time, as a result of either natural processes or human influence. Land & Water Consulting should be kept apprised of any such events and should be consulted for further investigations if any changes are noted, particularly during construction activities where excavations often reveal subsurface conditions. Since subsurface conditions (including contamination concentrations) can change within a limited period of time and space, this inherent limitation to the representation of site conditions provided by this report should always be taken into consideration particularly if the report is used after a delay in time.

#### **DATA SHOULD NOT BE SEPARATED FROM THE REPORT**

The report as a whole presents the findings of the site assessment and the report should not be copied in part or altered in any way. Logs, figures, laboratory data, drawings, etc. are customarily included in our reports and are developed by scientists or engineers based on their interpretation of field logs, field testing and laboratory evaluation of samples. This information should not under any circumstances be redrawn for inclusion in other documents or separated from the report in any way.

This report should be reproduced in full. No responsibility is accepted for use of any part of this report in any other context or for any other purpose or by third parties.

#### **RESPONSIBILITY**

Environmental reporting relies on interpretation of factual information using professional judgement and opinion and has a level of uncertainty attached to it, which is much less exact than other design disciplines. As noted earlier, the recommendations and findings set out in this report should only be regarded as interpretive and should not be taken as accurate and complete information about all environmental media at all depths and locations across the site.

## APPENDIX S

### LIST OF DATABASES SEARCHED

## Dataset Listing

Datasets contained within this report, detailing their source and data currency:

Dataset Name	Custodian	Supply Date	Currency Date	Update Frequency	Dataset Buffer (m)	No. Features On-site	No. Features within 100m	No. Features within Buffer
Cadastre Boundaries	PSMA Australia Limited	01/11/2021	01/11/2021	Quarterly	-	-	-	-
EPA Site Contamination Index	EPA South Australia	13/02/2023	13/02/2023	Monthly	1000m	0	0	38
EPA Environmental Protection Orders	EPA South Australia	28/02/2023	28/02/2023	Monthly	1000m	0	0	2
EPA Environmental Authorisations	EPA South Australia	28/02/2023	28/02/2023	Monthly	1000m	0	0	7
EPA Assessment Areas	EPA South Australia	25/01/2023	25/01/2023	Quarterly	1000m	0	0	1
EPA Groundwater Prohibition Areas	EPA South Australia	27/02/2023	20/08/2022	Monthly	1000m	0	0	0
Defence PFAS Investigation & Management Program - Investigation Sites	Department of Defence	14/02/2023	14/02/2023	Monthly	2000m	0	0	0
Defence PFAS Investigation & Management Program - Management Sites	Department of Defence	14/02/2023	14/02/2023	Monthly	2000m	0	0	0
Airservices Australia National PFAS Management Program	Airservices Australia	13/02/2023	13/02/2023	Monthly	2000m	0	0	0
Defence 3 Year Regional Contamination Investigation Program	Department of Defence	02/09/2022	02/09/2022	Quarterly	2000m	0	0	0
National Waste Management Facilities Database	Geoscience Australia	26/05/2022	07/03/2017	Annually	1000m	0	0	1
EPA Collection Depots	EPA South Australia	20/12/2022	20/08/2022	Quarterly	1000m	0	0	0
National Liquid Fuel Facilities	Geoscience Australia	23/08/2022	15/03/2012	Annually	1000m	0	0	1
Historical Business Directories (Premise & Intersection Matches)	Hardie Grant, Sands & McDougall			Not required	100m	21	242	242
Historical Business Directories (Road & Area Matches)	Hardie Grant, Sands & McDougall			Not required	100m	-	142	142
UBD Business Directory Dry Cleaners & Motor Garages/Service Stations (Premise & Intersection Matches)	Hardie Grant, Sands & McDougall			Not required	250m	0	11	22
UBD Business Directory Dry Cleaners & Motor Garages/Service Stations (Road & Area Matches)	Hardie Grant, Sands & McDougall			Not required	250m	-	4	5
Mines and Mineral Deposits	Department for Energy and Mining	13/02/2023	13/02/2023	Quarterly	1000m	0	0	0
Groundwater Aquifers	Department for Environment and Water	29/03/2021	01/01/2008	Annually	1000m	1	1	1
Drillholes	Department for Environment and Water	19/10/2022	07/10/2022	Quarterly	2000m	0	0	814
Surface Geology 1:100,000	Department for Energy and Mining	12/07/2018	01/07/2018	As required	1000m	1	1	3
Geological Linear Structures 1:100,000	Department for Energy and Mining	12/07/2018	01/07/2018	As required	1000m	0	0	0
Atlas of Australian Soils	ABARES	19/05/2017	17/02/2011	As required	1000m	1	1	1
Soil Types	Department for Environment and Water	12/07/2018	01/07/2009	As required	1000m	1	1	1
Atlas of Australian Acid Sulfate Soils	CSIRO	19/01/2017	21/02/2013	As required	1000m	1	1	1
Acid Sulfate Soil Potential	Department for Environment and Water	06/04/2022	18/02/2020	Annually	1000m	1	1	1
Soil Salinity - Watertable Induced	Department for Environment and Water	23/06/2022	09/06/2016	Annually	1000m	1	1	1
Soil Salinity - Non-watertable	Department for Environment and Water	19/04/2022	18/02/2020	Annually	1000m	1	1	1
Soil Salinity - Non-watertable (magnesia patches)	Department for Environment and Water	19/04/2022	18/02/2020	Annually	1000m	1	1	1

Dataset Name	Custodian	Supply Date	Currency Date	Update Frequency	Dataset Buffer (m)	No. Features On-site	No. Features within 100m	No. Features within Buffer
Planning and Design Code - Zones	Attorney-General's Department	13/02/2023	02/02/2023	Monthly	1000m	1	3	18
Planning and Design Code - Subzones	Attorney-General's Department	13/02/2023	08/12/2022	Monthly	1000m	0	0	3
Land Use Generalised 2020	Department of Planning, Transport and Infrastructure	18/10/2022	07/03/2022	Annually	1000m	1	3	12
Commonwealth Heritage List	Australian Government Department of Agriculture, Water and the Environment	03/06/2022	13/04/2022	Annually	1000m	0	0	0
National Heritage List	Australian Government Department of Agriculture, Water and the Environment	03/06/2022	13/04/2022	Annually	1000m	0	0	2
State Heritage Areas	Department for Environment and Water	06/04/2022	18/02/2020	Annually	1000m	0	0	0
SA Heritage Places	Department for Environment and Water	19/10/2022	23/09/2021	Quarterly	1000m	0	3	192
Aboriginal Land	Department for Energy and Mining	06/04/2022	08/04/2018	Annually	1000m	0	0	0
Planning and Design Code - Overlays - Bushfire	Attorney-General's Department	13/02/2023	13/02/2023	Monthly	1000m	0	0	0
Bushfires and Prescribed Burns History	Department for Environment and Water	06/04/2022	24/02/2020	Annually	1000m	0	0	0
Planning and Design Code - Overlays - Flooding	Attorney-General's Department	13/02/2023	13/02/2023	Monthly	1000m	0	0	3
Groundwater Dependent Ecosystems Atlas	Bureau of Meteorology	28/10/2022	26/10/2022	Annually	1000m	0	0	0
Inflow Dependent Ecosystems Likelihood	Bureau of Meteorology	28/10/2022	26/10/2022	Annually	1000m	0	0	0
Ramsar Wetland Areas	Department for Environment and Water	28/03/2022	18/02/2020	Annually	1000m	0	0	0

